



TECHNICAL SPECIFICATIONS

Revised January 2024
Please discard previous versions

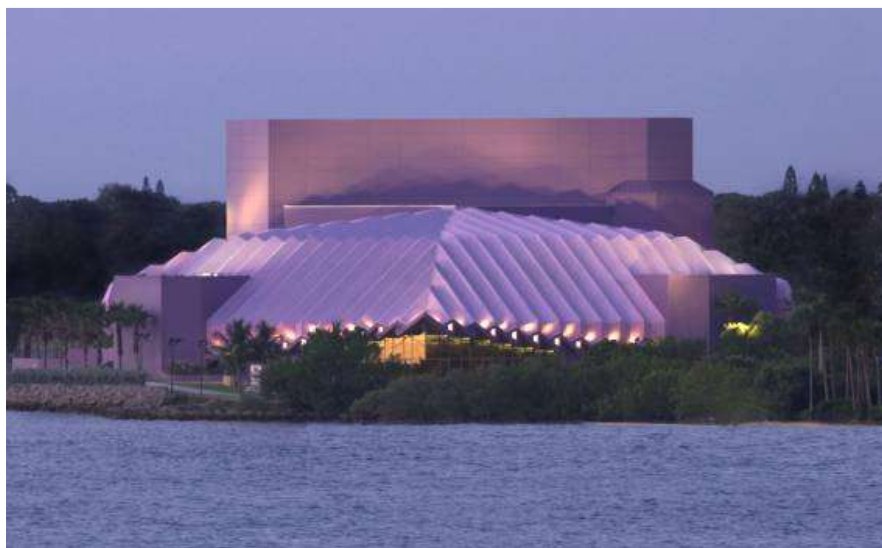


TABLE OF CONTENTS

General Information

Contacts	pg. 3
Directions & Map	pg. 4
Parking and Shore Power Plan	pg. 5
Seating Chart.....	pg. 6
Stage and Auditorium Plan/Sound Mix Position	pg. 7
Production Facilities.....	pg. 8
Phone Line and Internet Chart	pg. 8

Loading Dock

Carpentry / Fly

Stage Dimensions	pg. 9
Fly System.....	pg. 10
House Draperies.....	pg. 10
Line Set Schedule.....	pg. 11
Fly Rail/Pin Rail Schematic.....	pg. 12
Line Set Section	pg. 13
Rigging Details.....	pg. 14-16
Stage Floor Plan	pg. 17
Stage Lip and Proscenium Detail	pg. 18
FOH Rigging Points & Line Array/Subs Locations	pg. 18
Stage Plan with Layout Grid	pg. 19

Lighting / Electrics

Auditorium & Stage Section	pg. 21
House Rep Basic Lighting Plot.....	pg. 22
House Rep "Rock & Roll" Lighting Plot	pg. 23
House FOH Lighting Plot	pg. 24
FOH & Stage Lighting Positions.....	pg. 25
Stage Electrics & Sound Power Locations	pg. 26

Sound / Audio

Meyer Sound System	pg. 28-29
Projection	pg. 30

Properties.....

Pianos	pg. 30
Wardrobe.....	pg. 30
Orchestra Shell.....	pg. 31-32

Dressing Rooms

Green Room/Hospitality.....	pg. 33
Lower Level/Dressing Room Plan.....	pg. 34
3 rd Floor Education Room Plan	pg. 35
Grand Foyer Plan	pg. 36

Area Info and Maps.....

Policies and Procedures	pg. 39
-------------------------------	--------

PRODUCTION CONTACTS

NATE MYERS

Technical Director

(941) 263-6748 (Direct Line)
(941) 961-4136 (Production Cell)

NMyers@SarasotaFL.gov

GRIFFYN HOLCOMB

Assistant Technical Director

(941) 263-6760 (Direct Line)
(941) 376-8587 (Production Cell)

Griffyn.Holcomb@SarasotaFL.gov

HOUSE CREW, IATSE LOCAL 412

CHUCK LAWSON

Head Electrician

Cell: (941) 400-5131

LightGuyWCL2@gmail.com

JIM DESARIO

Head Audio

Cell: (813) 695-5669

JimPro1@me.com

ROY FISHER

Head Carpenter/Flyman

Cell: (941) 527-9763

RoyAlanFisher6@gmail.com

DORIAN BLAKE

Head Properties

Cell: (941) 350-7782

DBTropicalmagic@gmail.com

CRAIG CLARKE

House Steward/A2/Head Video

Cell: (941) 923-5111

Craig@iatse412.com

Business Agent, IATSE Local 412

ROY SORENSEN

Office: (941) 359-1254

Cell: (941) 914-1553

ia412ba@verizon.net

ADMINISTRATION CONTACTS

VAN WEZEL PERFORMING ARTS HALL

777 N. Tamiami Trail

Sarasota, FL 34236

Main Office: (941) 263-6751

Administrative Fax: (941) 263-6777

Box Office: (941) 955-7676 ext. 2597

Website: www.vanwezel.org

MARY BENSEL

Executive Director

(941) 263-6733 ext. 36733

Mary.Bensel@SarasotaFL.gov

STU KLEIN

General Manager, Operations & Facilities

(941) 263-6731 ext. 36731

Stu.Klein@SarasotaFL.gov

MICHELLE BENTE

Director of Marketing and Development

(941) 263-6734 ext. 36734

Michelle.Bente@SarasotaFL.gov

KYLE TUROFF

Booking & Events Manager

(941) 263-6770 ext. 36770

Kyle.Turoff@SarasotaFL.gov

DORIS BRENT

Rental Agent / Asst to Executive Director

(941) 263-6766 ext 36766

Ellen.Dyer@SarasotaFL.gov

JAN SCHMALL

Box Office Manager

(941) 263-6736 ext 36763

Janice.Schmall@sarasotafl.gov

JASON WHITE

Assistant Box Office Manager

(941) 263-6774 ext 36774

Jason.White@SarasotaFL.gov

DAVID COLSTON

House Manager

(941) 263-6737 ext. 36737

David.Colston@SarasotaFL.gov

JUSTIN GOMLAK

Director of Education & Community Engagement

(941) 263-6754 ext. 36754

Justin.Gomlak@SarasotaFL.gov

DIRECTIONS

GPS COORDINATES:

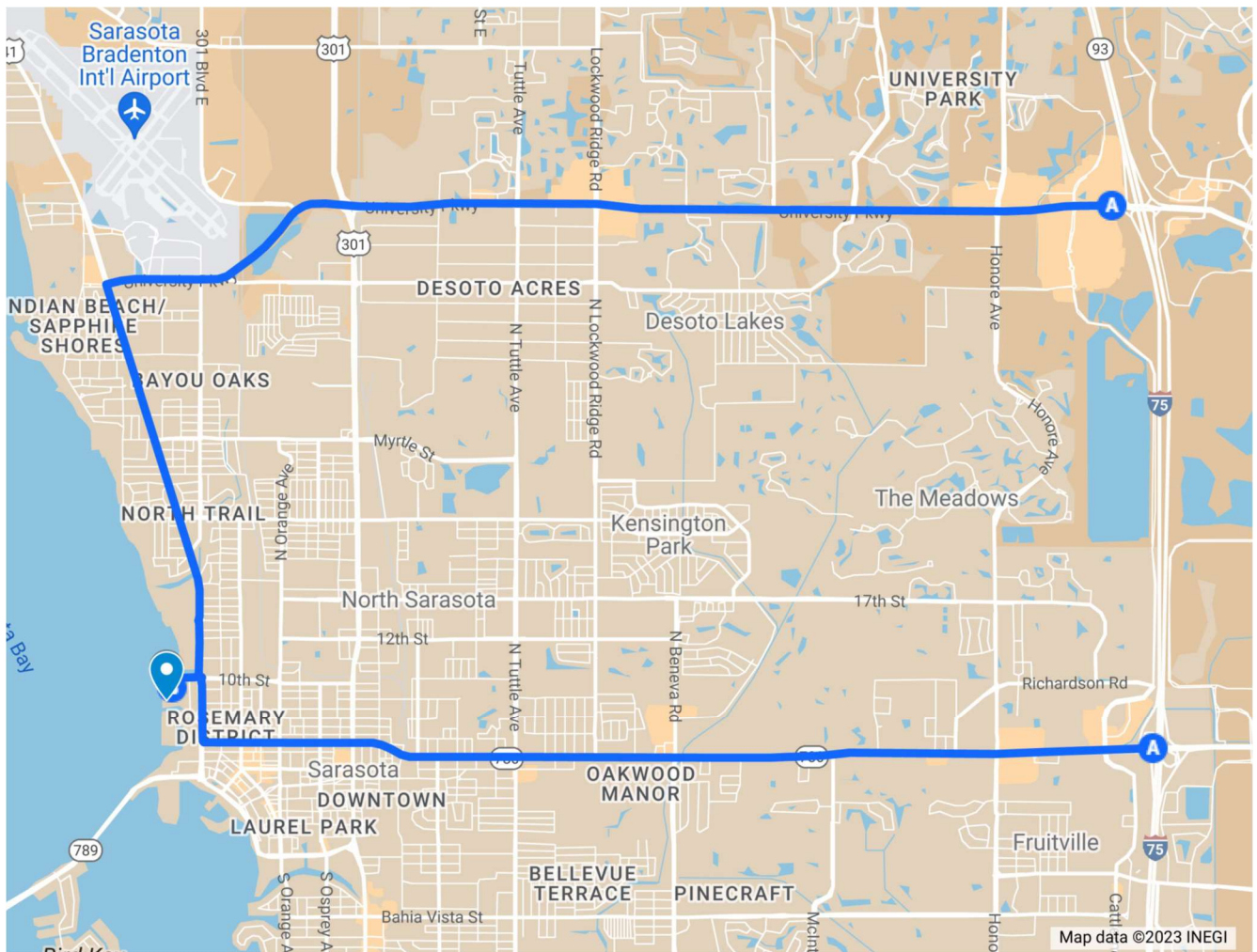
27.3448 N and -82.5493 W
27° 20.7 min N and 82° 33.0 min W

From Interstate-75N:

Take exit 210 (FRUITVILLE ROAD). Keep LEFT at the fork, follow signs for FL-780 W. Turn LEFT onto FRUITVILLE RD for 6.3 miles. At the traffic circle, take the FIRST EXIT onto N Tamiami Trail. At the next traffic circle, take the THIRD EXIT onto 10th street. Drive toward the Bay to the far end of the lot, turn down Aisle 7 to the loading dock. The Stage Door is just to the right of the loading dock. (Easily visible; see next page.)

From Interstate-75S:

Take exit 213 (University Pkwy). Turn RIGHT onto UNIVERSITY and drive WEST past the Sarasota Bradenton International Airport (approximately 6 miles). University ENDS at N TAMIAMI TRAIL (US-41). Turn LEFT (south) on N Tamiami Trail for 3 miles. At the traffic circle PAST our Marquee, Take the FIRST EXIT onto 10th street. Drive toward the Bay to the far end of the lot, turn down Aisle 7 to the loading dock. The Stage Door is just to the right of the loading dock. (Easily visible; see next page.)



PARKING AND SHORE POWER

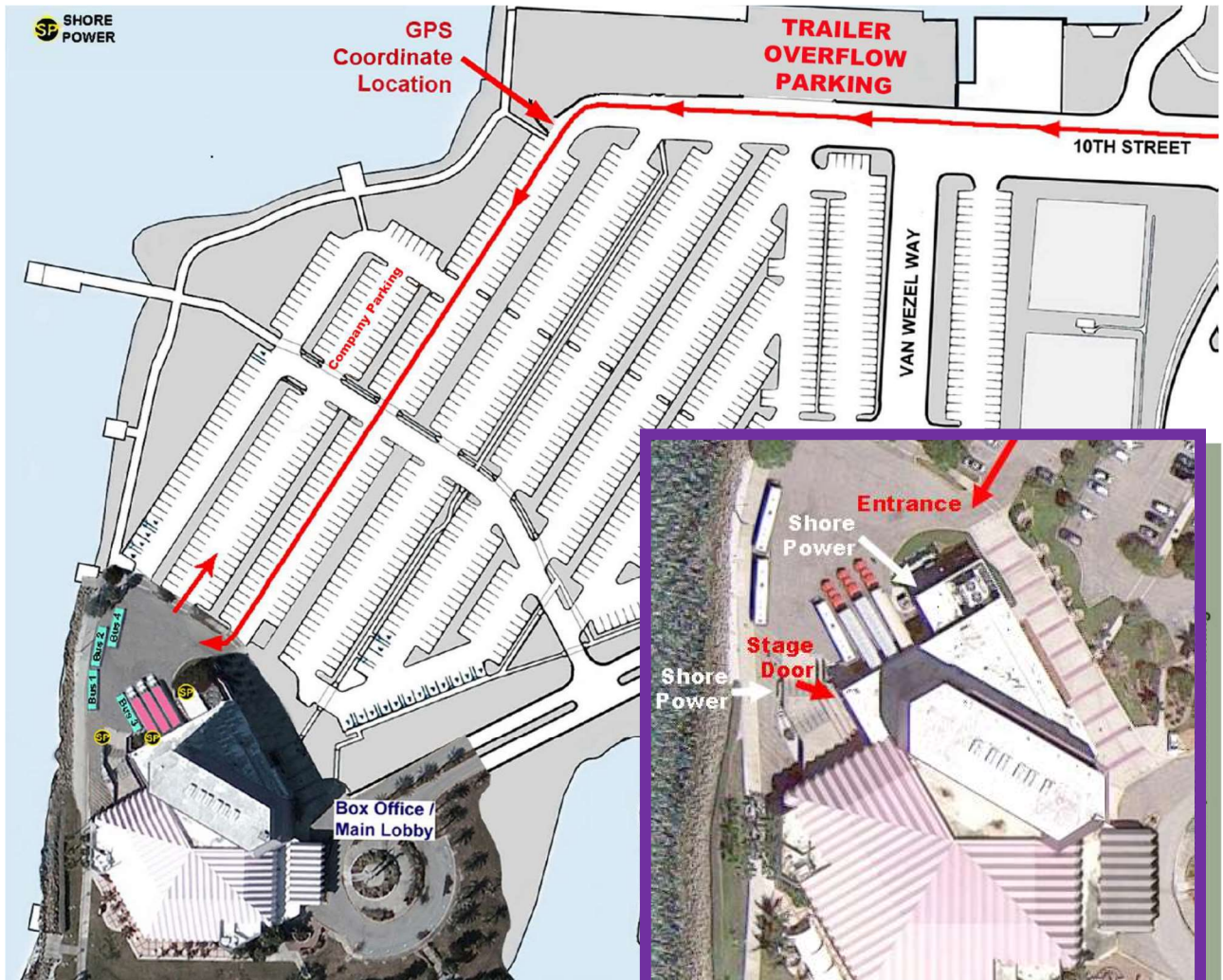
Van Wezel GPS Coordinates:

27.3448 N and -82.5493 W
27° 20.7 min N and 82° 33.0 min W

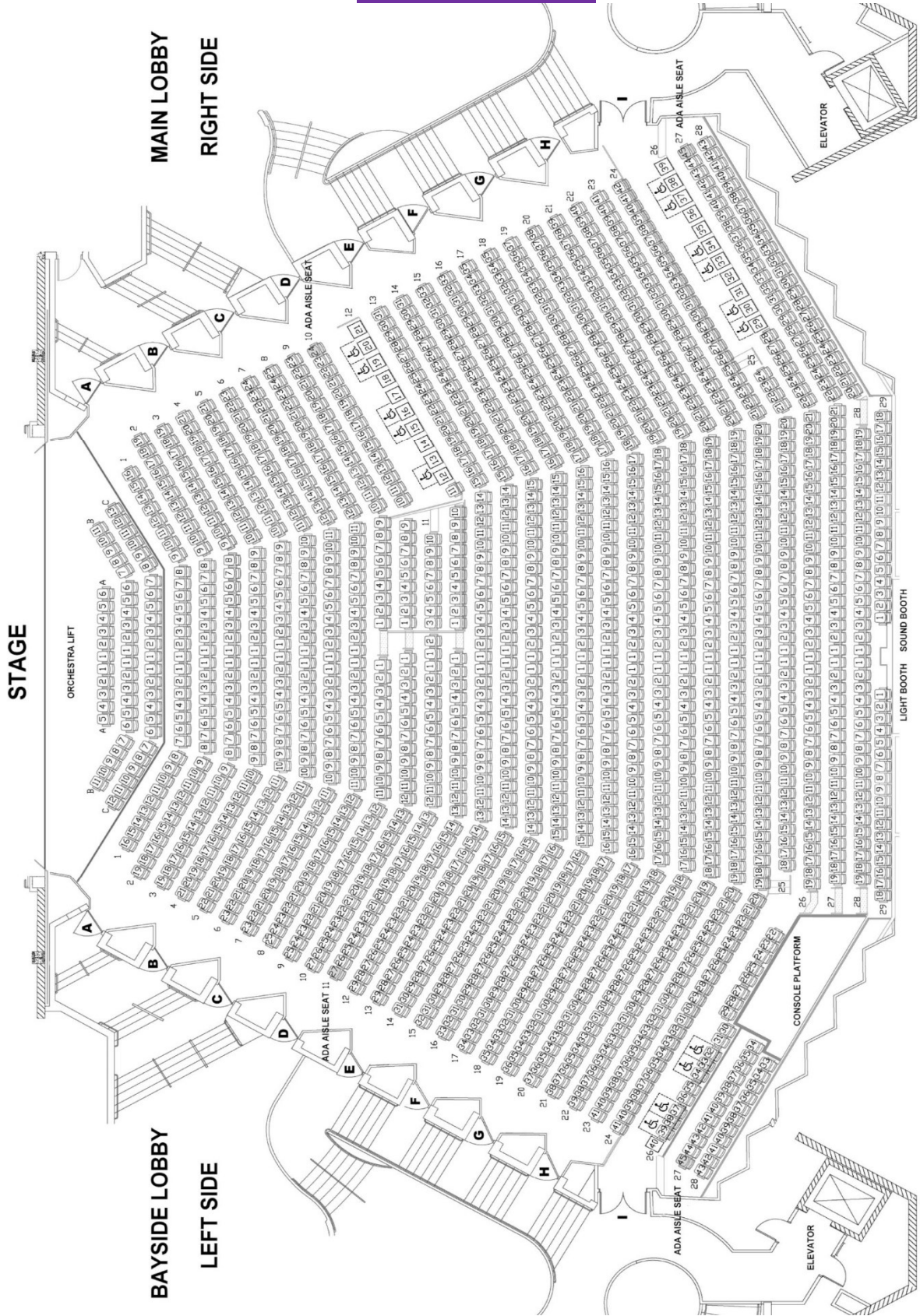
Trucks and Buses please note: Due to other deliveries and Bayside Lobby audience drop-off and pick-ups, only two semis may be left at the loading dock during an in-and-out performance. Additional trailers must be moved to the designated parking area. For runs longer than one day, only one trailer may be left at the dock; all other trailers must be moved to designated trailer parking area. Idling is not permitted by the City.

SHORE POWER

- 3 – Milbank U5000 RV Power Units, each containing
 - (1) 50A, 2P, 120/240V w/14-50R
 - (1) 30A, 1P, 120V w/TT30R
 - (1) 20A, 1P, 120V w/5-20R GFI
- 2 are near loading dock.
- 1 is near bus parking, minimum 50' bus to Milbank box.
- *50'-75' cable recommended. No tails provided.

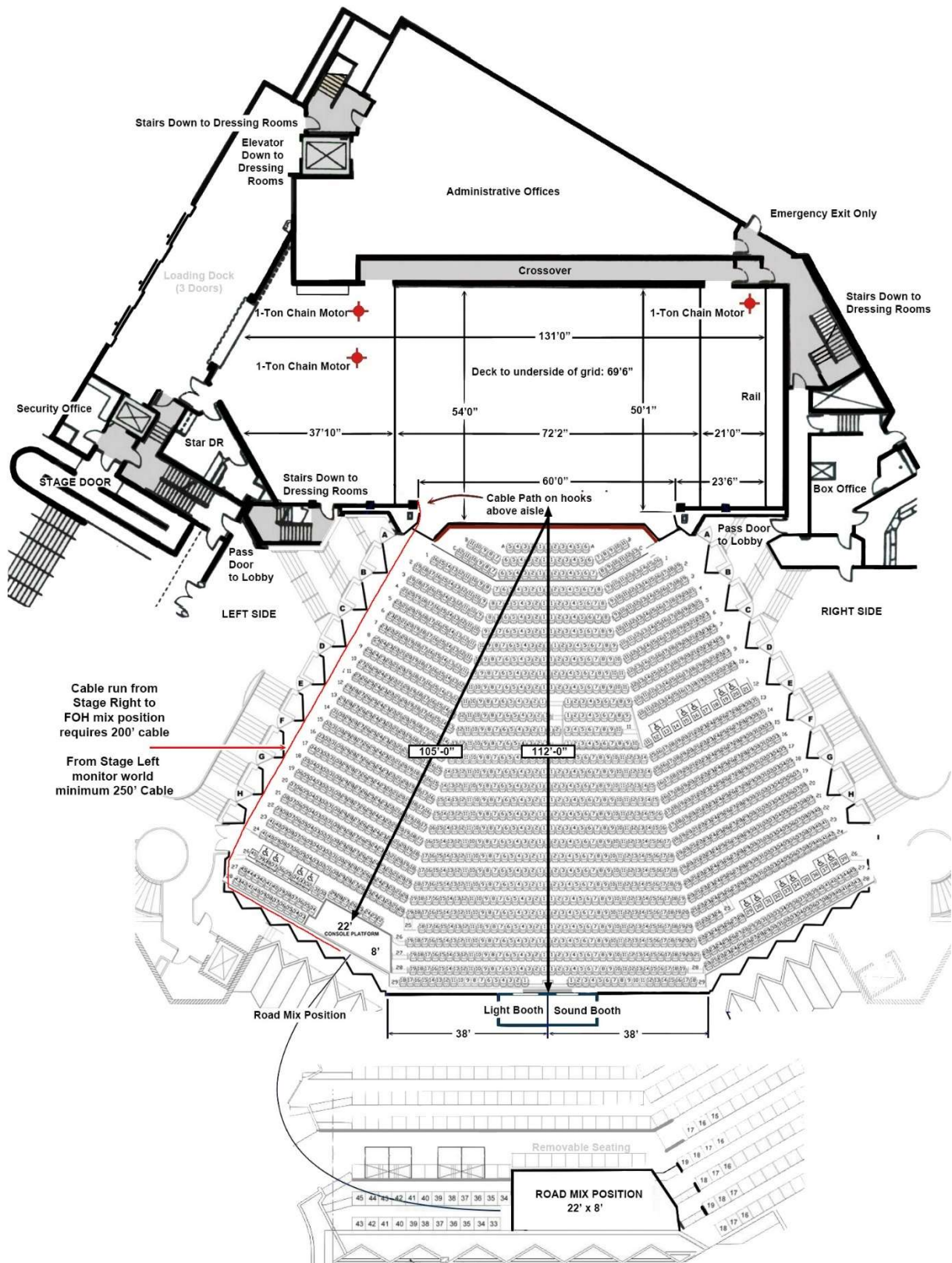


SEATING CHART



VAN WEZEL PERFORMING ARTS HALL

STAGE AND AUDITORIUM PLAN WITH MIX POSITION



PRODUCTION FACILITIES

Production Office (ext. 36762)

*Lower level across from Green Room (see floor plan p.31).
Three desks typical. High-speed wireless and hardwire Internet.
4 direct phone lines. (Long distance incoming only.)
(Please refer to phone and Internet chart for available capabilities.)*

Green Room and Green Room Kitchen (ext. 36739) – 46 Person Max Capacity

*Lower level across from production office (see floor plan p.31).
Typical table setup for 36. Buffet and drinks tables. Wireless Internet.*

Rehearsal Room (ext. 36741)

TBA during advance. 3rd floor meeting room, approximately 30'x20' usable area (see p. 32).

PHONE LINE AND INTERNET CHART

Van Wezel Main Number: (941) 263-6751

Wireless Internet access available. Password posted.

Due to City of Sarasota policies, long-distance access is blocked from backstage phones.

Please arrange for long-distance calling cards, cell phones, or Internet phone/fax.

AREA CODE: 941

<u>LOCATION</u>	<u>EXT #</u>	<u>Direct #</u>	<u>LOCATION</u>	<u>EXT #</u>	<u>Direct #</u>
Production Office	36762	263-6762	Security Office/Stage Door	36744	263-6744
<i>2 direct analog phone lines:</i>		941-263-6787	Sound Booth	36791	263-6791
<i>5 high-speed Internet ports</i>			Light Booth	36783	263-6783
			Stage Right	36763	263-6763
			Stage Left	36765	263-6765
Green Room Kitchen	36739	263-6739	Follow spot Booth	36779	263-6779
Dressing Room #1 (Star, SR)	36763	263-6763			
<i>1 high-speed Internet port</i>			Admin Reception	36751	263-6751
Dressing room #2 (LL)	36765	263-6765	Box Office Manager	36736	263-6736
<i>1 high-speed Internet port</i>			Asst Box Office Manager	36774	263-6774
Dressing Room #5 (Star, LL)	36764	263-6764	Grand Foyer Kitchen	36747	263-6747
			Education Meeting Room	36741	263-6741
High-speed Wireless Internet			Public phone (Lower Level)		263-6740
<i>Stage, Hall and all lower-level dressing rooms, offices, and Green Room</i>					
Hard-wire high-speed Internet					
<i>Stage Right and Left, Production Office, Star Dressing Room 1 stage right and Dressing Room 2 on lower level. Additional locations as required. Confirm with Technical Director.</i>					

LOADING DOCK

Access via 10th St at Tamiami Trail (see directions and schematic, p. 4-5)

Van Wezel GPS Coordinates:

27.3448 N and -82.5493 W

27° 20.7 min N and 82° 33.0 min W

Dimensions:

Loading doors: (3) 9'-6" high x 7'-10" wide (to outside)

(1) 19'-10" high x 16'-0" wide to stage (interior)

Push to stage: 20'

Dock deck: Tractor-trailer level (+ 4'-0"), forklift not required.

Ramps: Variety of lengths available, up to 16'

One freight and one passenger elevator plus pit lift from dock/stage level to dressing room level.

2 stacking motors located Stage Right. One Stage Left.

Accommodations:

Designated parking space for three full-size motor coaches in addition to unused dock spaces.

(See *Parking Plan* on page 5 for further information.)

Shore Power:

3 – Milbank U5000 RV Power Units containing

(1) 50A, 2P, 120/240V w/14-50R

(1) 30A, 1P, 120V w/TT30R

(1) 20A, 1P, 120V w/5-20R GFI

1 is near loading dock, approx. 50' to cab at center dock door.

1 is near bus parking, approx. 50' to side of bus closest to building.

1 is near loading dock, approx. 6' West of the West Dock Door.

No tails provided.

CARPENTRY / FLY

ROY FISHER

Head Carpenter/Flyman

Cell: (941) 527-9763



ALL EVENTS MUST OBSERVE FIRE CURTAIN LOCATION RESTRICTIONS. NO EXCEPTIONS

Stage Dimensions

(See *schematics*)

Proscenium:

Height 30'-0"

Width 60'-0"

Grid height:

Deck to underside of grid 69'-6"

Clear to support 'I' beam 68'-6"

Stage height:

Auditorium floor to stage 3'-7"

Stage house:

Plaster to back wall 50'-1"

Plaster to 1st line set 2'-0"

Plaster to last line set 46'-6"

Stage lip to back wall 54'-0"

Stage lip to curtain line 7'-4"

Stage lip to line set #1 6'-10"

Stage floor 72'-2" W x 54'-0"

SL locking rail to SR dock access 131'-0"

Stage house (con't):

SL wing (proscenium to locking rail) 23'-6"

SR wing (proscenium to loading dock) 47'-6"

Stage lip to FOH mix position 95'-0"

Stage lip to control booth windows 110'-0"

Stage Floor:

Resilient tongue & groove maple floor

Dimensions: 72'-2" W x 54'-0"

Color: Black

Crossover:

Dedicated upstage hallway.

Orchestra pit:

Dimensions 12'-0" x 48'-0" at CL

Normally set at ≈8'-0" below stage level for orchestra use,

Loading depth ≈13' below stage level

Removable seat wagon with 58 seats.

When seated, 3'7" below stage level.

Gala Spiral Lift elevator.

Fly System

(See schematics)

Type of fly system:

Single purchase counterweight.
System operates stage left at deck level.

Arbor capacity:

1500 lbs.

Available weight:

30,000 lbs. + normal house plot

Battens:

Quantity: 77
Length: 69'-0"
Diameter: 1.5"
On-center distance:
6" centers, 7 lines per batten
3 gaps for orchestra shell ceiling (see schedule)
1 gap for motorized electrics (LS #4)

Sheaves cannot be kicked; diverters required.

Pin Rail:

Stage Left: 32' above stage floor
Stage Right: 39' above stage floor

Rigging:

3 riggers for on-stage points from grid—2 up, 1 down. Grid 69'6" from stage floor.
IA Local 412 has ETCP Certified riggers.

Working height of battens:

Pipe in trim: 3'-10"
Pipe out trim: 67'-2"

Loading Gallery:

63'6" above stage floor. Mid Bridge 32'0" above stage floor.

FOH rigging (see schematic):

9 points 16" DS of stage lip
Points 6'6" apart, from center
Due to line array, maximum front truss length approx. 40' (see schematic).
Points approx. 36' above stage.

Chain motors: 2 CM 1-ton, installed Stage Right for stacking/unstacking.

House Draperies

(Line locations for regular house hang including storage)

House Curtain (Main)

Dimensions: 34'-0" high x 80'-0" wide
Type: 25 oz Velour
Color: Burgundy
Line set: **2** (2'-6") **Permanent hang**
Guillotine or traveler (not recommended)

Legs

Quantity: 7 pairs
Dimensions: 34'-0" high x 20'-0" wide
Type: 23 oz. Velour
Color: Black
Typical line sets: **3** (3'-6"), **11/12** (10'-6"/11'-0")
(L/R split for monitoring consoles), **27** (18'-6"),
38 (26'-0"), **49** (32'-0"), **67** (43'-0")

Borders

Quantity: 7
Dimensions: 16'-0" high x 60'-0" wide
Type: 23 oz. Velour
Color: Black
Line sets: **1** (2'-0"), **10** (10'-0"), **26** (18'-0"),
37 (25'-6"), **48** (31'-6"), **69** (44'-0")

Travelers

Quantity: 2 Black w/Fullness
Dimensions: 34'-0" high x 70'-0" wide
Line set: **35** (24'-6") **Permanent hang**
62 (40'-0") **Permanent hang**

Scrim

Quantity: 1 Black Sharkstooth
Dimensions: 34'-0" high x 68'-0" wide
Typical line set: **51** (33'-0")

Cyc

Quantity: 2 White 'Natural' Muslin
Dimensions: 32'-9" high x 60'-0" wide
Line sets: **63 & 73** (41'-0" & 46'-0")

Blackout Drop

Made from 6th and 7th Legs.
Dimensions : 34' high x 50' wide
Typical line set : **48** (31'-6")

Projection Screen:

DaLite 11'6" x 15' Dual Front & Rear Screen
DaLite 13' x 22' Dual Front & Rear Screen

LINE SET SCHEDULE WITH HOUSE HANG

(For Excel version contact Technical Director)

Shell ceiling panels removable for long runs ONLY. See NOTE ① ♦ below!

ALL EVENTS MUST OBSERVE FIRE CURTAIN LOCATION RESTRICTIONS. NO EXCEPTIONS

Battens are 69'-0" long. Main Curtain batten is 80'-0".

Set #	Dist. from Plaster ^③	Rep Plot Assignment:
0	1'-3"	Motorized Fire Curtain^①
1	2'-0"	1 st Border
2	2'-6"	Main Curtain^①
3	3'-6"	1 st Legs
4	4'-6"	Motorized 1st Electric^①
4A	5'-6"	
5	6'-0"	
6	6'-6"	
7	7'-0"	
8	7'-6"	
9	8'-6"	Orchestra Ceiling Panel #1^{①♦⑥}
9A	9'-6"	
10	10'-0"	**SEE NOTE ②!
11	10'-6"	2 nd Border
12	11'-0"	2 nd Legs SR (split for monitoring)
13	11'-6"	2 nd Legs SL (split for monitoring)
14	12'-0"	House 2nd Electric
15	12'-6"	
16	13'-0"	
17	13'-6"	
18	14'-0"	
19	14'-6"	
20	15'-0"	
21	15'-6"	
22	16'-0"	
23	16'-6"	6 MAC Vipers
24	17'-0"	
25	17'-6"	
26	18'-0"	3 rd Border
27	18'-6"	3 rd Legs
28	19'-0"	
29	19'-6"	House 3rd Electric
30	20'-6"	
31	21'-0"	
31A	21'-6"	**SEE NOTE ②!
32	22'-6"	Orchestra Ceiling Panel #2^{①♦⑥}
33	23'-6"	
34	24'-0"	
35*	24'-6"	1st BlackTraveler^{①④}
36	25'-0"	

Set #	Dist. from Plaster ^③	Rep Plot Assignment:
37	25'-6"	4 th Border
38	26'-0"	4 th Legs
39	26'-6"	
40	27'-0"	House 4th Electric
41	27'-6"	
42	28'-0"	6 MAC Vipers
43	28'-6"	
44	29'-0"	
45	29'-6"	Rock & Roll Truss (PARS)
46	30'-6"	Rock & Roll Truss (PARS)
47	31'-0"	
48	31'-6"	6 th and 7 th Legs (Blackout)
49	32'-0"	5 th Border
50	32'-6"	
51	33'-0"	5 th Legs
52	33'-6"	
53	34'-0"	House 5th Elec
54	34'-6"	
54A	35'-0"	** SEE NOTE ②!
55	36'-0"	Orchestra Ceiling Panel #3^{①♦⑥}
56	37'-0"	
57	37'-6"	
58	38'-0"	
59	38'-6"	
60	39'-0"	
61	39'-6"	
62	40'-6"	2nd Black Traveler^①
63	41'-0"	
64	41'-6"	White Cyc
65	42'-0"	Border #6 (Storage)
66	42'-6"	Border #7 (Storage)
67	43'-0"	
68	43'-6"	Wardrobe Lighting
69	44'-0"	
70	44'-6"	
71	45'-0"	Small Projection Screen (Storage)
72	45'-6"	Large Projection Screen (Storage)
73	46'-0"	White Cyc #2 (Bounce)
74	46'-6"	Last Upstage Line set

① Permanent Hang

♦ Exception: Orchestra Shell ceiling panels may be removed for 1+ week Broadway shows only.

②** LS 9A, 31A and 54A usable only when ceiling panels are removed. Shell LS 9, 32 and 55 not usable with panel removed.

③ 0'0" Plaster Line: 1'0" DS of Fire Pocket

④ 1st Black Traveler (LS 35): 29'-6" to Stage Lip

⑤ LS 67: Available between US orchestra shell ceiling and back shell wall if wall moved US 12"

⑥ Clearance against back wall under Orchestra Clouds in high storage position: 10'-0"

Note: LS LS9A, 34A and 54A are only available when ceiling panels have been removed for Broadway shows of 1+ weeks.

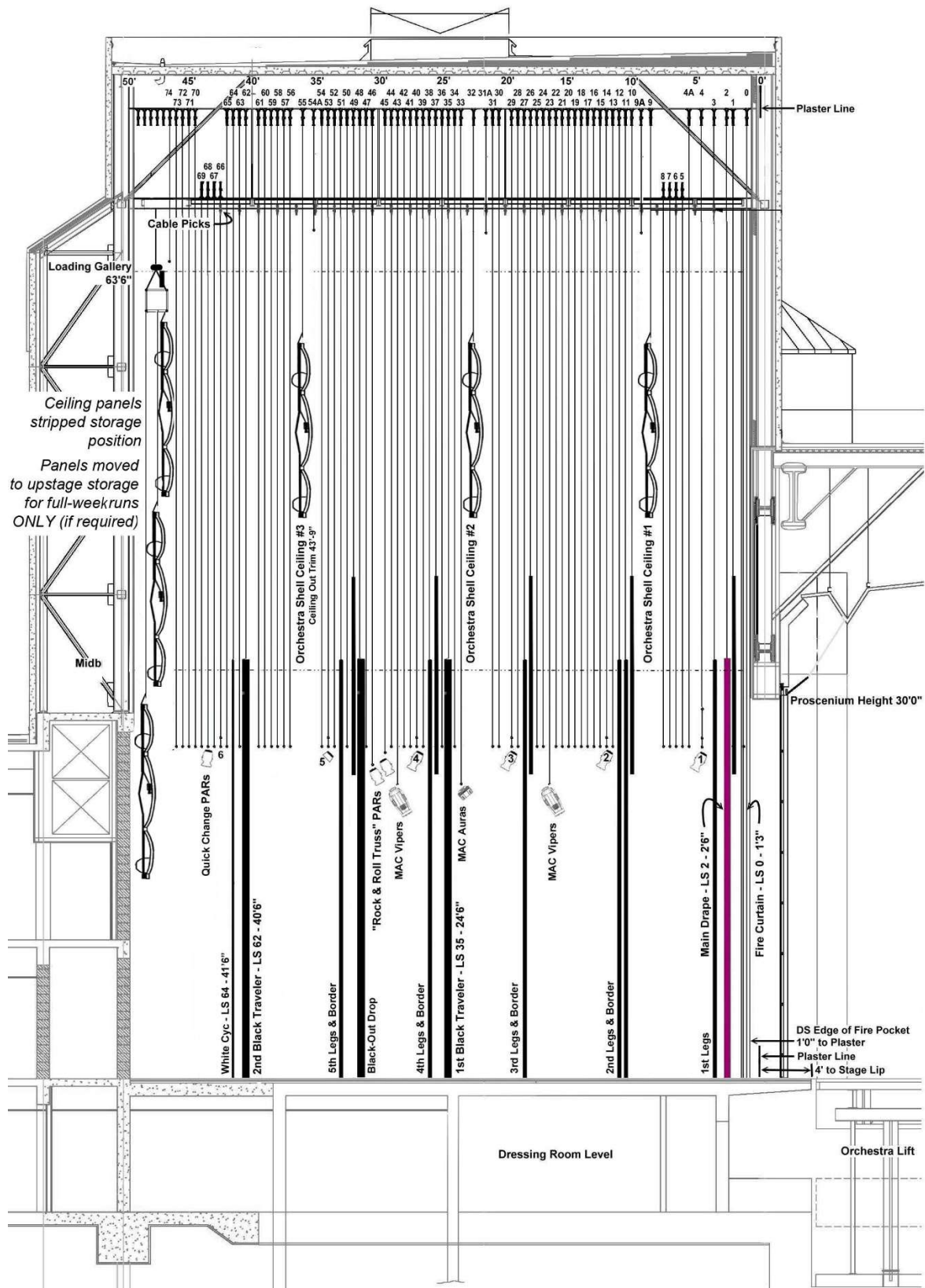


LINE SET SECTION

with Typical House Hang & Lighting Rep Plot

(See Line Set Schedule for most recent layout)

Note: LS 9A, 34A and 54A are only available when ceiling panels have been removed for Broadway shows of 1+ Weeks



RIGGING DETAILS

AN ENGINEERED LOAD STUDY FOR GRID CAPACITIES, PROSCENIUM HANG POINTS AND FOH BALCONY RAIL, COMPLETED BY **TLC ENGINEERING SOLUTIONS** OF MELBOURNE, FL, IS AVAILABLE FROM THE TECHNICAL DIRECTOR. THIS DOCUMENT SHALL BE REFERENCED FOR SAFE LOADING OF RIGGED POINTS. NOTE THAT NOT ALL RIGGING SCENARIOS ARE LISTED.

IMPORTANT: LOADING CRITERIA MUST BE MET FOR BOTH BAR GRATING AND GRATING SUPPORTING BEAMS WHEN MAPPING POINTS.

The following data listed for Walking Grid and High Roof Framing are as found within AutoCAD construction drawings of facility 1999/2000

WALKING GRID:

DESIGN LIVE LOADS FOR GRID LEVEL FRAMING ARE:

UNIFORM:

-50 PSF ALL AREAS

CONCENTRATED:

-@ LOFT WELLS: 150 PLF BOTH VERTICALLY AND HORIZONTALLY (RIGGING)

-@ BAR GRATED AREAS. 400 # POINT LOADS, TOTAL OF 10 SIMULTANEOUSLY WITH MIN. SPACING OF 4'-0" BETWEEN LOADING POINTS. (RIGGING)

-@ LOADING BRIDGE: 300 PSF UNIFORM (RIGGING)

HIGH ROOF FRAMING:

DESIGN LIVE LOADS FOR ROOF LEVEL FRAMING ARE:

UNIFORM:

18 PSF ALL AREAS WITH MAXIMUM OF 33 PSF FOR PONDED WATER IN VICINITY OF DRAINS.

CONCENTRATED:

-@ HANGER TO GRID: 10 KIPS LIVE (RIGGING) 10 KIPS DEAD

-@ TYP. W33 BEAM: 500 PLF BOTH VERTICALLY AND HORIZONTALLY @ BOTTOM FLANGE (RIGGING)

-@ W33 HEAD BEAMS: 2250 PLF BOTH VERTICALLY AND HORIZONTALLY (RIGGING)

GRID HATCH:

LOCATION: USR, 50" DS OF US WALL

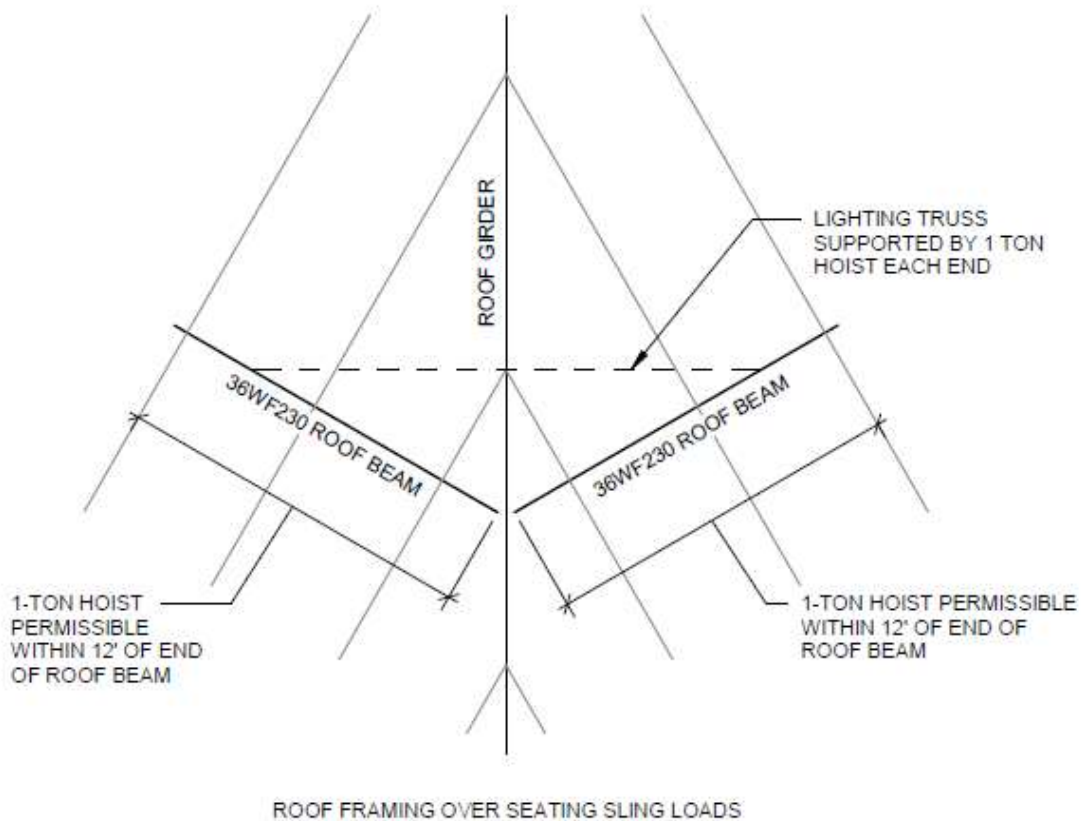
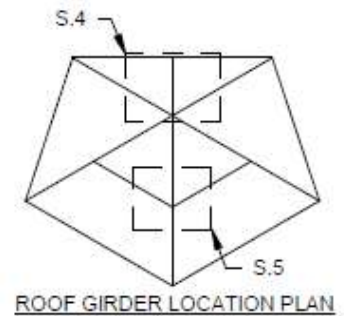
NO RIGGING SECTION CONTAINING HATCH IS 10' US/DS X 3' SL/SR

HATCH OPENING: 32" X 53"

FOH BALCONY RAIL:

16" X 16" X 20' BOX TRUSS HUNG WITH (2) 1TON MOTORS.

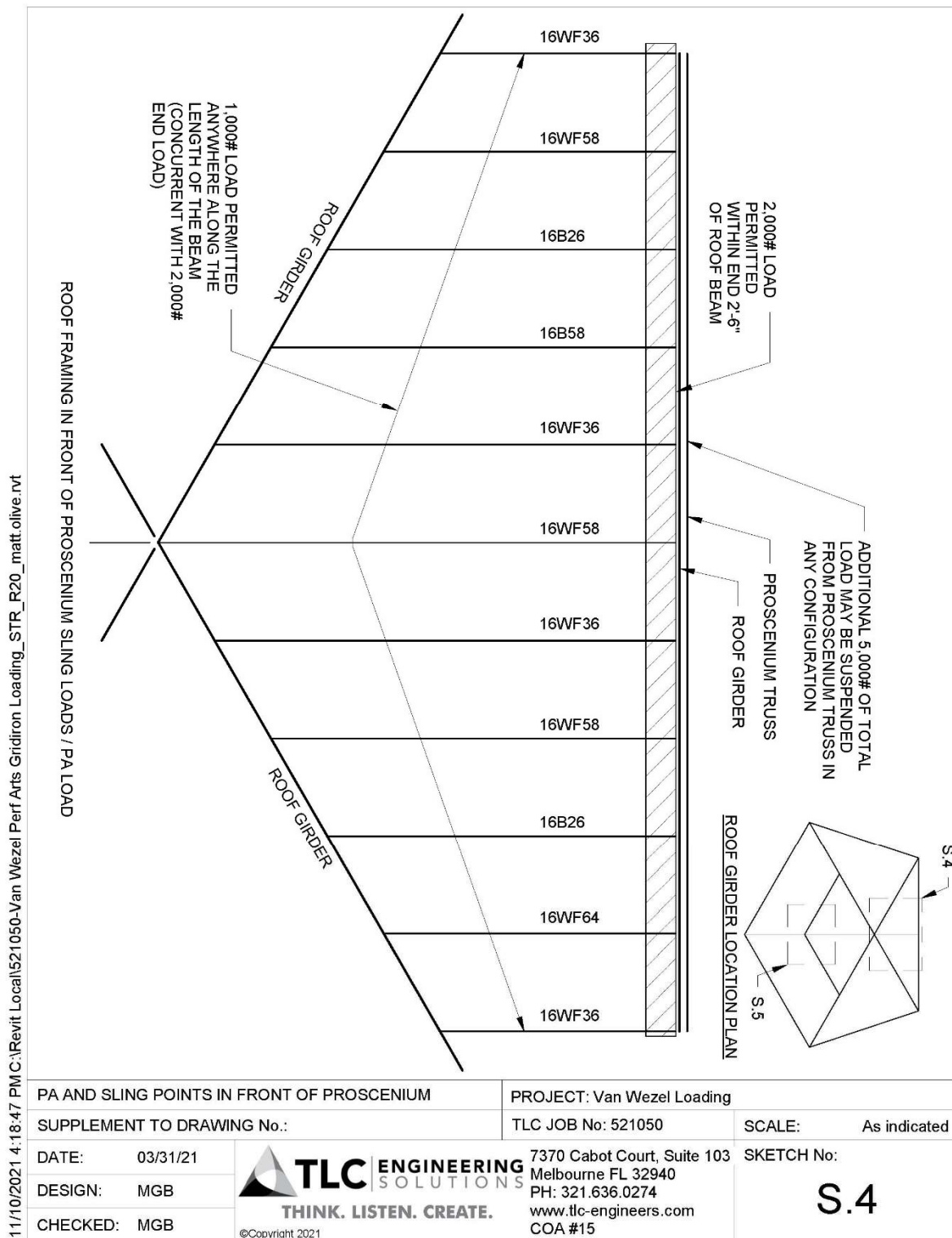
***TRUSS MUST BE ATTACHED TO DEAD HUNG LINES AT TRIM TO RELIEVE
MOTOR(S) OVER (2) SECONDARY POINTS AFTER FLYING***



DRAWING SOURCED FROM TLC ENGINEERING STUDY

FOH PROSCENIUM BEAM POINTS

NOTE: VW PA SYSTEM HANGS FROM TWO BEAMS, BRIDLED. SEE FULL ENGINEERING STUDY FOR LOADING CAPABILITIES



DRAWING SOURCED FROM TLC ENGINEERING STUDY

(Lower-level plans on p. 31)

(Lower-level plans on p. 31)

Van Wezel Stage Dimensions

Showing Orchestra Shell Storage Positions

This detailed floor plan illustrates the stage area and surrounding facilities. The stage itself is a large yellow rectangle with a width of 50'1" and a depth of 72'2". The deck to the underside of the grid is 69'6" clear to support an I-beam, with a total clear width of 68'6". The stage is flanked by a 54'0" wide area on the left and a 60'0" wide area on the right. The stage is connected to the backstage area by a 21'0" wide rail. The backstage area includes a 131'0" wide crossover and a 23'6" wide area. The stage is surrounded by various rooms and facilities, including Administrative Offices, Stairs Down to Dressing Rooms, Elevator Down to Dressing Rooms, Loading Dock (3 Doors), Security Office, Stairs Down to Stage Door & Dressing Rooms, DR #1, Stairs Down to Dressing Rooms, Stairs Down to Spot Booth, Stairs Down to Bayside Lobby, Pass Door, Box Office, and Emergency Exit Only. The stage is also connected to the Orchestra Lift / Front Row Seating area. A 5' grid for reference is shown in the backstage area, with a 32'6" clearance undergully. The stage is also connected to the Stairs Down to Dressing Rooms area. The stage is also connected to the Stairs Down to Dressing Rooms area. The stage is also connected to the Stairs Down to Dressing Rooms area.

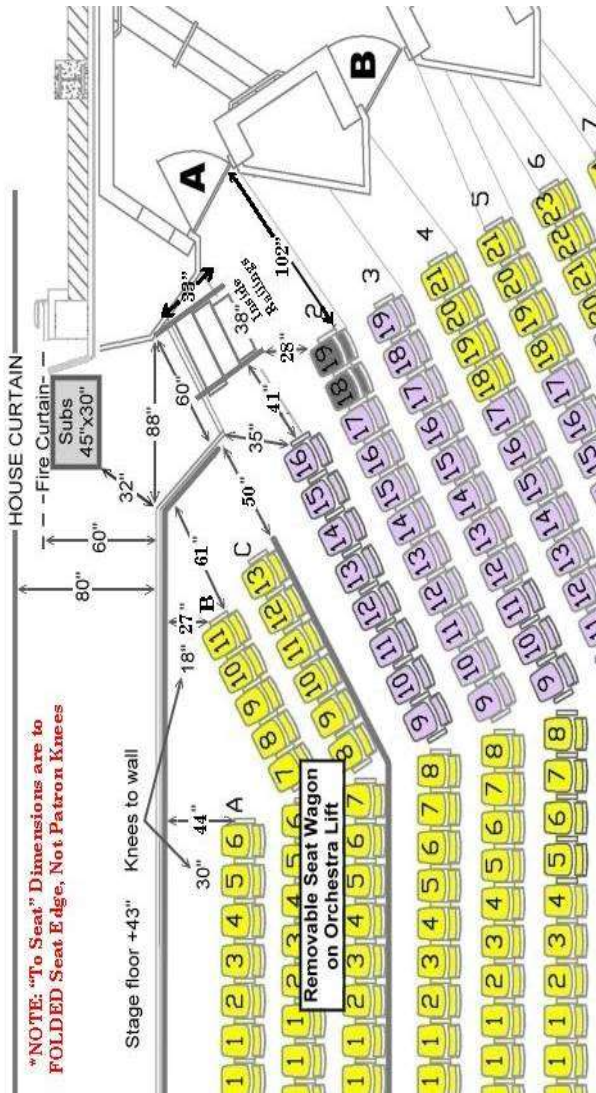
STAGE LIP AND PROSCENIUM DETAIL

Stage Apron Dimensions

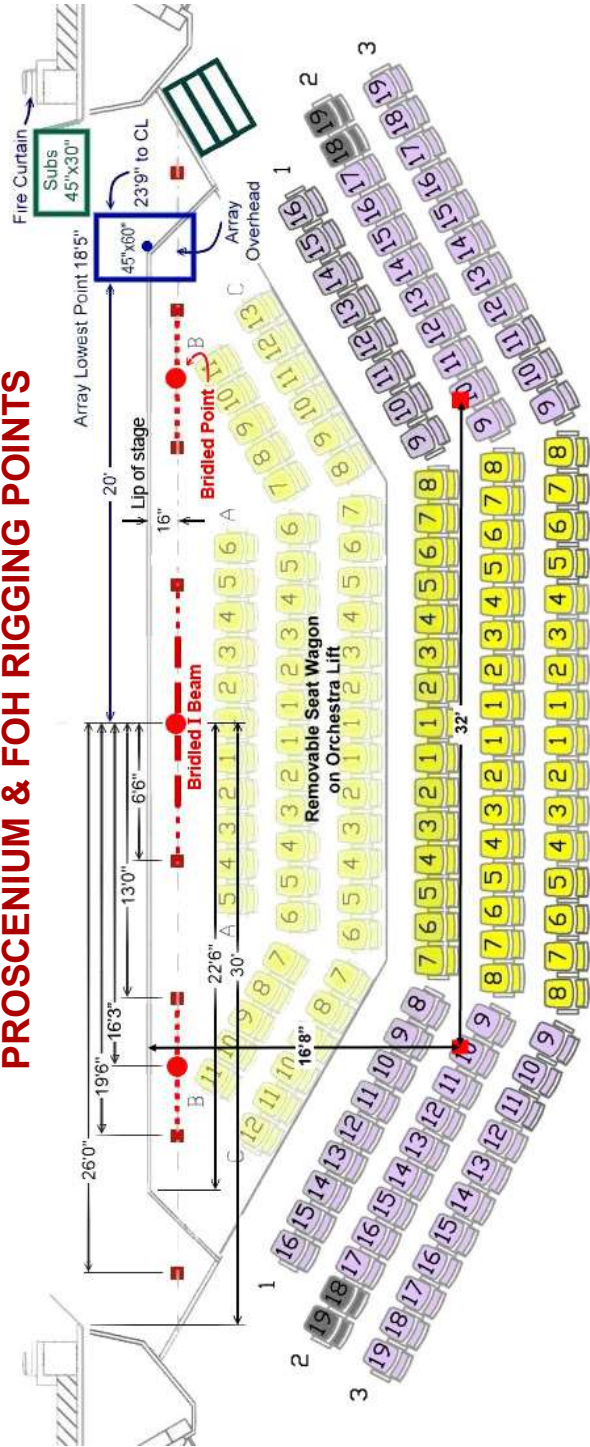
FOH Rigging Points

Line Array/Subs Locations Approximate

STAGE LIP DETAIL



PROSCENIUM & FOH RIGGING POINTS

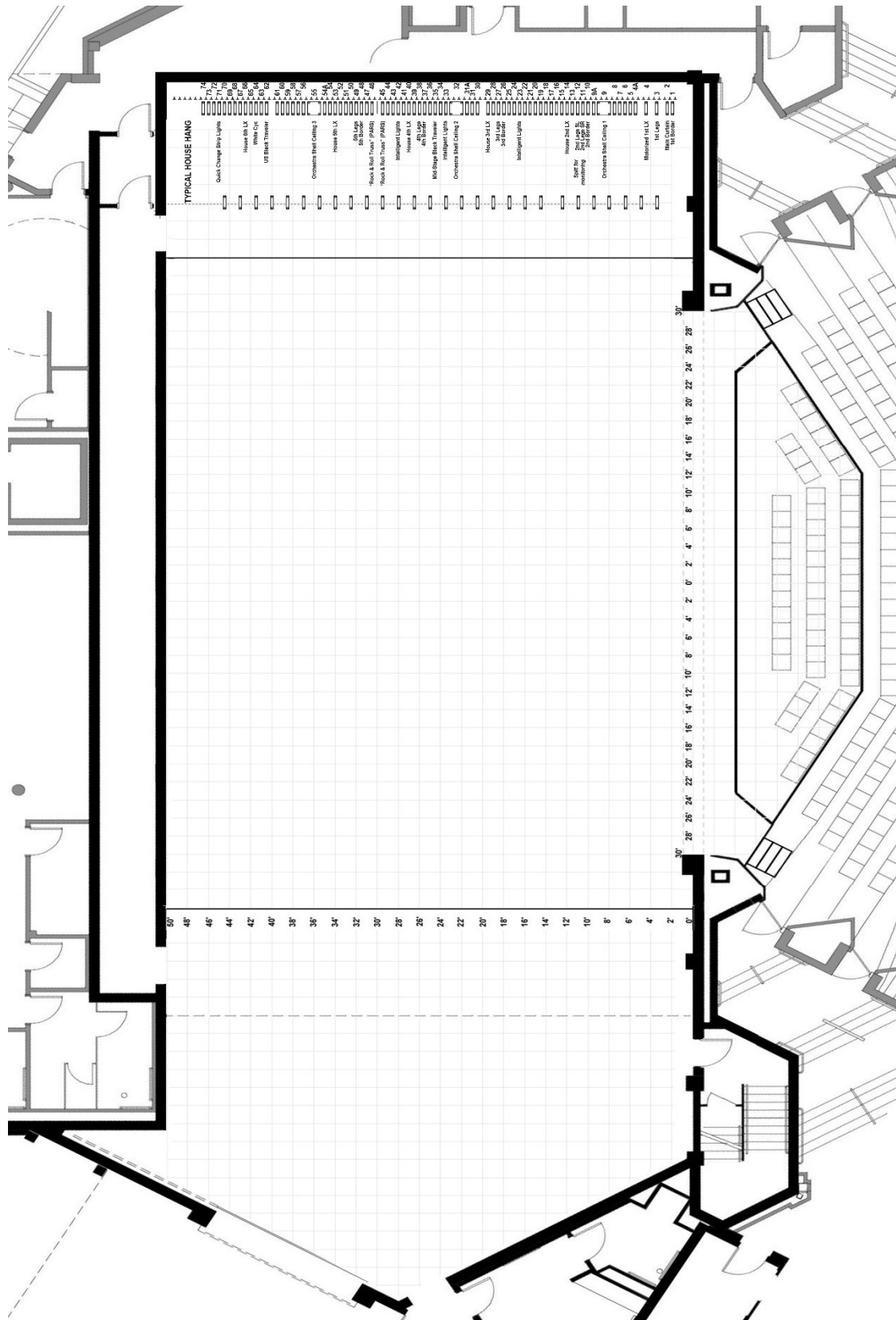


All ■ points high structural steel (double 4"x4" - 3/8" angle iron)

STAGE PLAN WITH LAYOUT GRID

(Each square is 2' x 2')

NOTE: SEATS NOT TO SCALE – FOR STAGE REFERENCE ONLY



LIGHTING/ELECTRICS

CHUCK LAWSON

Head Electrician
Cell: (941) 400-5131



Company switches

Cam lock connections on 400 Amp switches

<u>Qty.</u>	<u>Amperage and Specification</u>	<u>Location</u>
2	400 Amp, 3 phase, 2X neutral	USR (1 also cabled to DSR)
2	200 Amp, 3 phase, 2X neutral	USR
1	200 Amp, 3 phase, 2X neutral	USL (Audio)
1	200 Amp, 3 phase, 2X neutral	DSL (Audio)

Control

Consoles:

GrandMA 2 Light 8-Universe Console
ETC Ion 4000 w/ 20x20 fader wing

Control Location:

Light booth back center of hall behind Row 28

Road Console Location: (see p. 15)

8'x22' rear House Left Center
105' from proscenium
200' snake from SR / 300' snake from SL

Dimmers:

598 - ETC SENSOR 2.4 kw (20A) dimmers
2 DMX Universes
Patchable DMX lines to all lighting positions

Houselights:

Controlled from Light Booth and Stage Right

FOH Lighting Positions

(See section drawing)

<u>Position</u>	<u>Dist. to Plaster</u>	<u>Elevation</u>	<u>Throw</u>	<u>Angle</u> (down to DSC)
1 st Cove (Near)	26'	40'	50'	55°
2 nd Cove (Far) FS Booth	56'	38'	70'	30°
House Box Booms	30'	18'-36'	34'-48'	

Equipment Inventory

<u>Brand and Description</u>	<u>#</u>	<u>Lamp</u>	<u>Brand and Description</u>	<u>#</u>	<u>Lamp</u>
MAC Viper Profiles	12	HTI 1000 W	ETC Source 4 PAR	150	HPL 575 W
MAC Auras LED Wash	10	LED	ProCan 4-Lite Blinders	4	
Martin RUSH MH6	10	LED	3 Cell L&E Broad Cyc	16	FHM 1 kw
Martin RUSH MH11	6	250w 11R Lamp	3 Circuit Min Strips	12	75 W/Circuit
ETC Lustr 2's	12	FOH Plot	6'-0" 3 Cell "Sky Cyc"	8	FFT 1 kw
ETC Source 4 ERS	201	HPL 750 W			
50°	20				
36°	96				
26°	51				
19°	67				
10°	26				
5°	14				

Followspots:

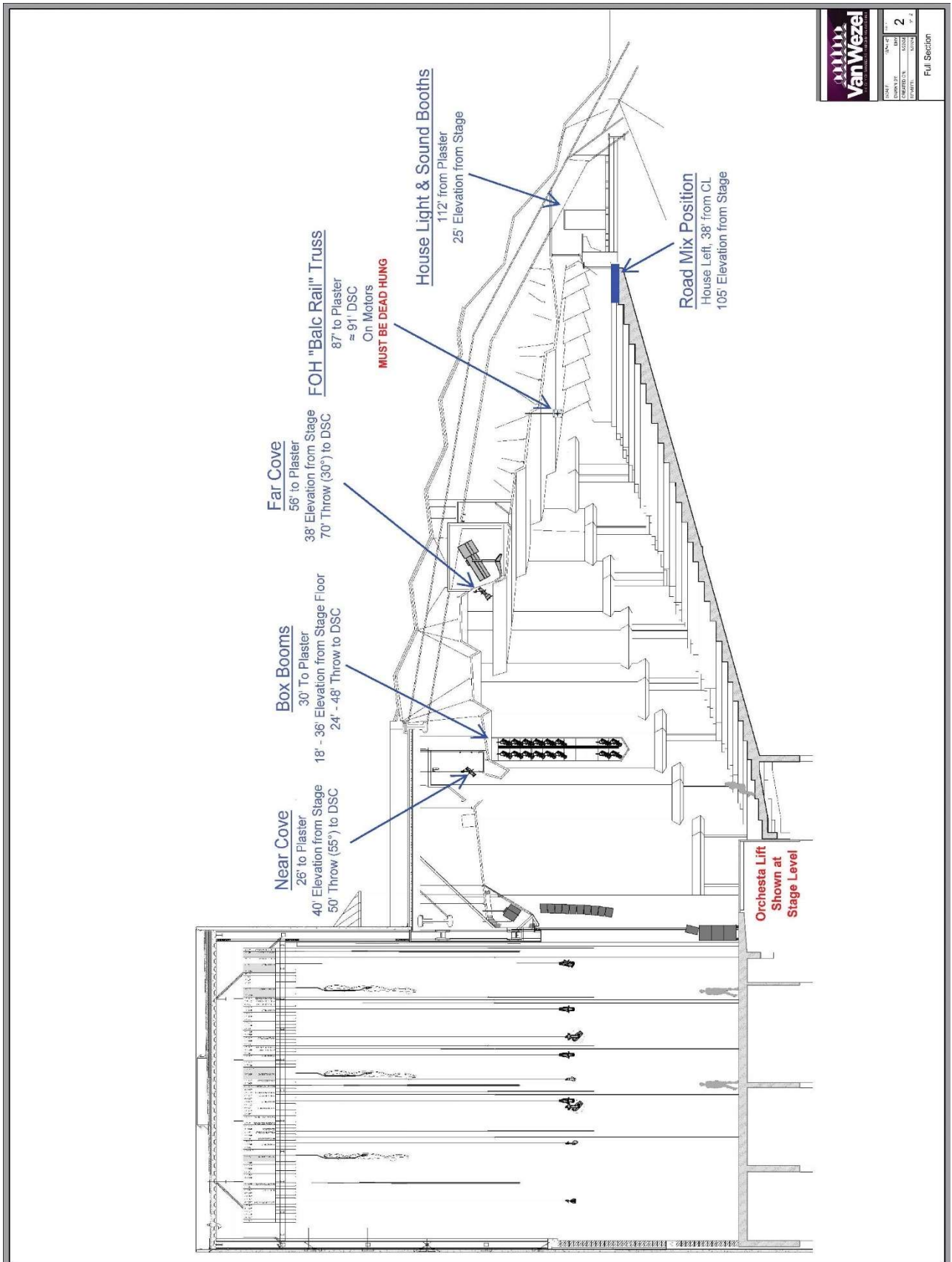
(4) Lycian Superstar 1295 ELT 3K Follow Spots w/Telrads *(See section drawing)*

Misc:

1 – Diffusion DF-50 hazer		Gel Extenders	24
Donut(s) (6.25")	12	S4 Irises	10
Gobo Holders A	19	6" Barndoors	12
Gobo Holders B	38	8" Barndoors	46

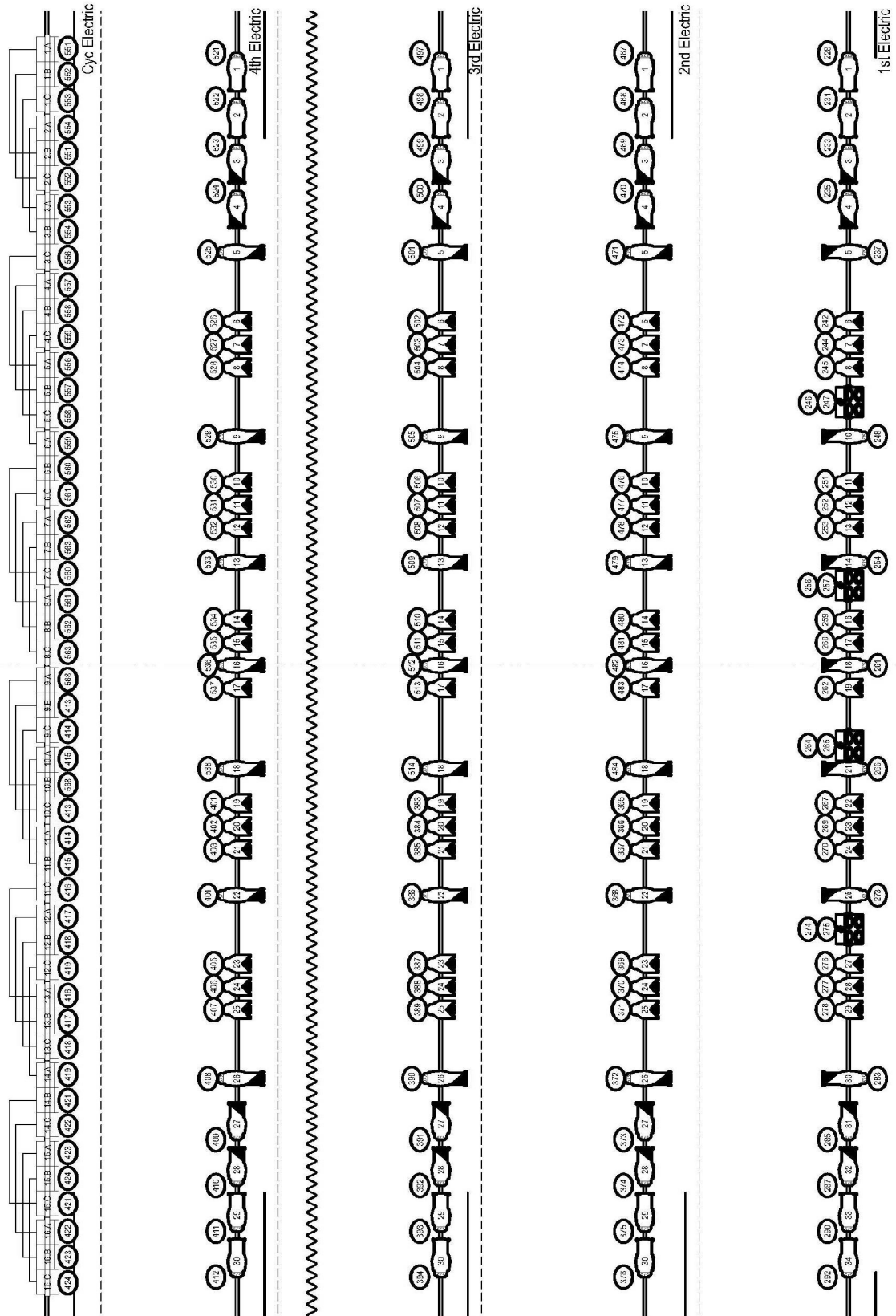
AUDITORIUM AND STAGE SECTION

(All stage and auditorium plans are available in AutoCAD. Please contact the Technical Director.)



HOUSE REP PLOT – BASIC

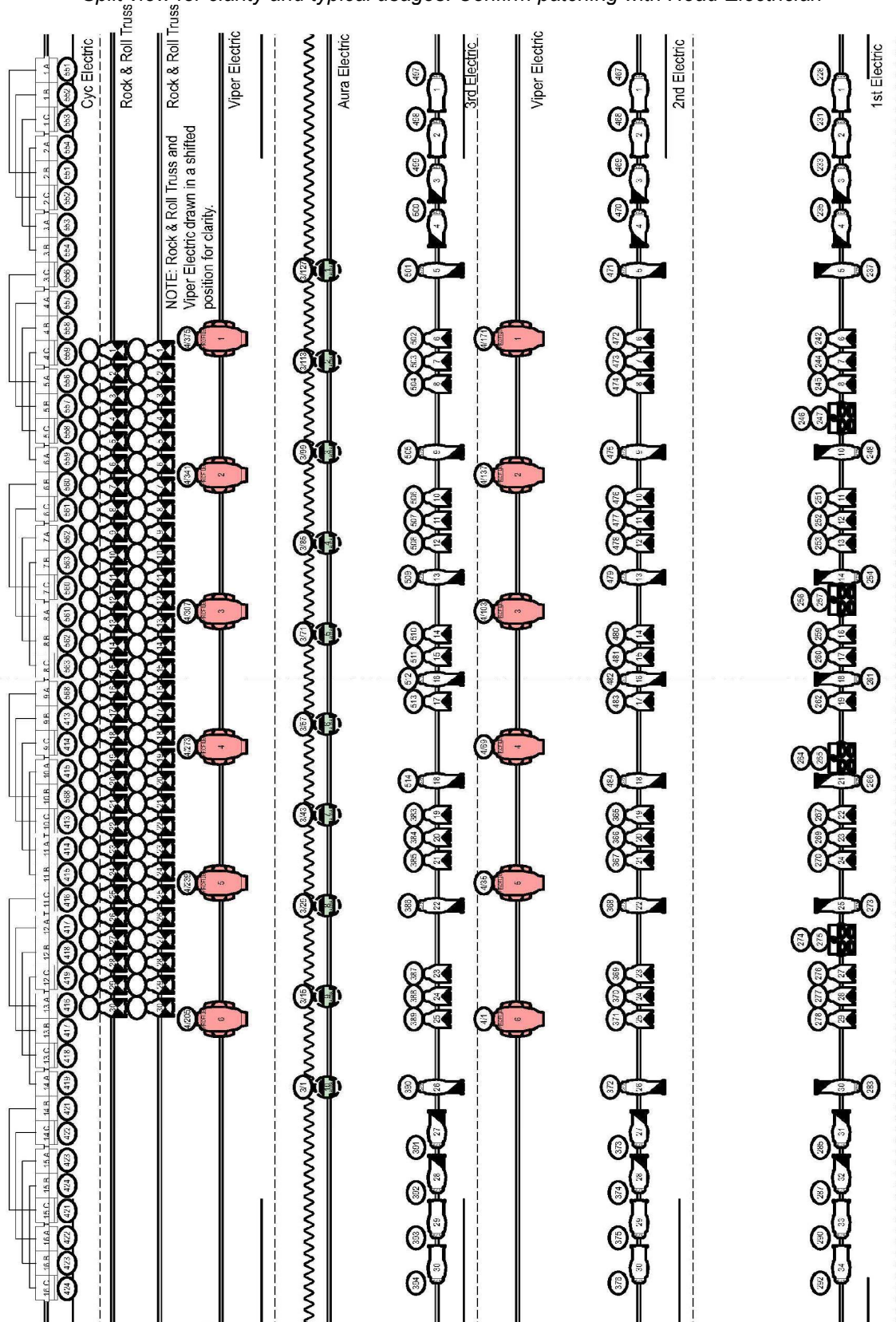
Both “Basic” and “Rock & Roll” plots (next page) are usually hung together
Split view for clarity and typical usages. Confirm patching with Head Electrician



Basic Lighting Plot

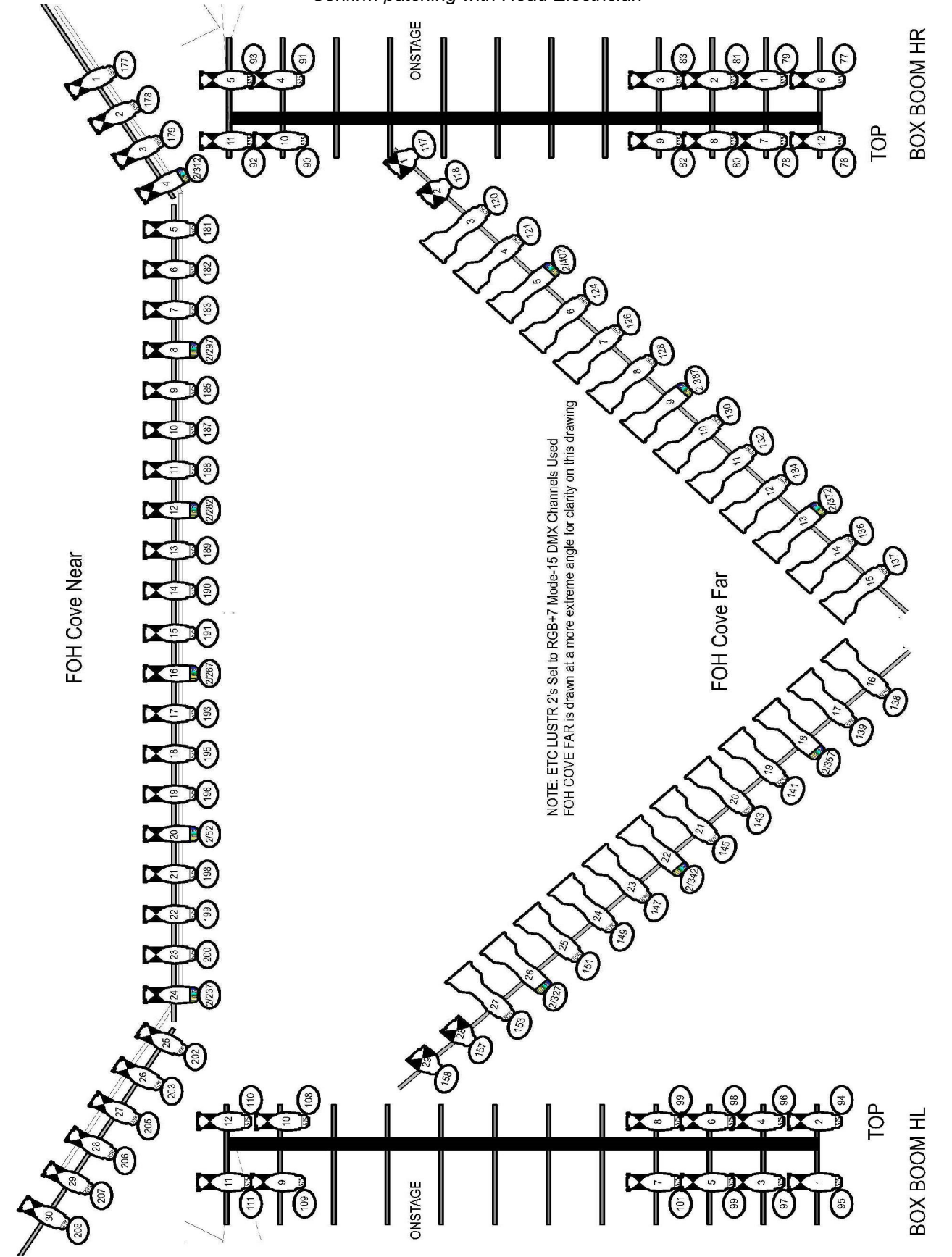
HOUSE REP PLOT – “ROCK & ROLL”

Both “Rock & Roll” and “Basic” plots (previous page) are usually hung together.
Split view for clarity and typical usages. Confirm patching with Head Electrician



HOUSE FOH REP PLOT

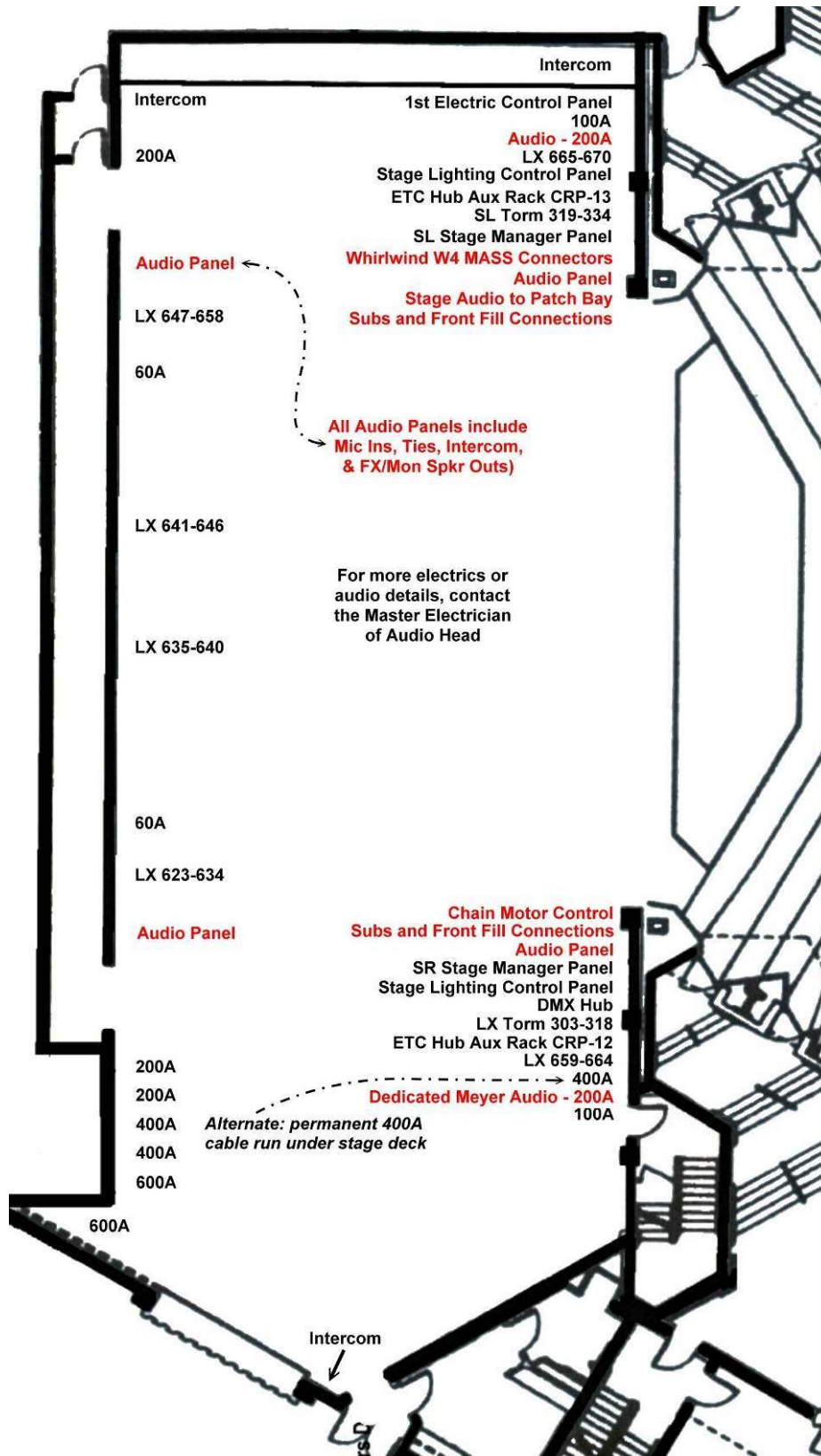
Confirm patching with Head Electrician



(For House Rep Plots, see pp. 22-24)



STAGE ELECTRICS & SOUND POWER LOCATIONS



AUDIO

JIM DESARIO
Head Audio
Cell: (813) 695-5669



Control

House Sound Control Location:

House booth back center of hall behind Row 28

Road Mix Location: (see p. 15)

8'x22' rear House Left Center

≈ 110' from proscenium

200' snake from SR / 300' snake from SL

Monitor/Page:

Symetrix Back Stage Audio

Production Communications:

Clear-Com Intercom and TW 12C Interface

12 Stations: SR, SL, Sound Booth,
Light Booth, 4 Follow spots.

Clear-Com FreeSpeak II with 10 WX BP's

(6) Motorola Stage Radios (403.00-470.00MHz)

Assistive Listening Systems:

Induction Loop

Equipment Inventory

(Check with Technical Director or Head Audio for latest updates)

Mixing Consoles:

Two (2) Yamaha CL5

Yamaha PM5D-RH, v 2.27 (Jan 2012)

Rios:

2 – 32 x 24 (1-D, 1-D2)

1 – 1608 D, 1- RI 8, 1-RO 8

Fixed Speakers:

Main L/R Array

10 Meyer MICA per side

L/R Down Fill

2 Meyer UPA-1P

Center Fill (Above proscenium)

1 Meyer MILO 120

Subwoofers

6 Meyer 700-HP, cardioid Config.

Front Fill

6 Meyer UPM-1P

2 Galileo 616 processors, RMS remote
monitoring system

FOH SIM with flat response by Meyer Sound

Monitoring:

10 – EAW SM200IH – 12" switchable

2 – JBL VRX915M – 15" 2-way.

2 – EAW LA325

2 – Galaxy HS7 Personal Monitors

6 – EAW JF80

18 in-house monitor sends.

10 channel stage amp rack

(4) QSC PLD4.5 4 Channel Amps

Playback:

2 – Tascam MD-CD1 Combo

1 – Tascam CD-RW 900

1 – Tascam CD-400 U

Yamaha Network Switches:

4 – 2 in booth, 2 on stage

Splitters, Fanouts, Snakes:

56 ch. to FOH mix and 56 ch. iso output for monitoring.

1 – Whirlwind 56-channel transformer split

1 – Whirlwind 56-channel fanout, W4 MASS

Connector to 56 XLR3F, 15'

5 – 12-pair mic sub snakes

(1–25', 2–50', 2–75')

2 – 16 channel subs

2 – 8 channel Subs

Microphones:

10 – Shure UR2-SM58 UHF **(470.00-530.00MHz)**

10 – Shure UR1 Belt Pack w/TA4M

2 – Sennheiser SKP 300 G3 Plug-on Mic Transmitters

2 – AKG WMS450 Handheld (C5/Band 7, D5/Band 1)

6 – Countryman E6 w/belt packs (1 cocoa)

4 – Countryman B6 w/belt packs

2 – DPA Lavs

4 – MM Lavs

6 – SM 58-LC

6 – SM 57-LC

6 – SM 81-LC

2 – DPA 4099 (2 P, 1 C)

2 – EV RE20

6 – Sennheiser MD421

3 – Sennheiser MD451

2 – AKG 414

1 – Shure drum kit set (Beta 91, 4 clampable Beta 98)

1 – AKG D112 kick

1 – Shure B-52 kick

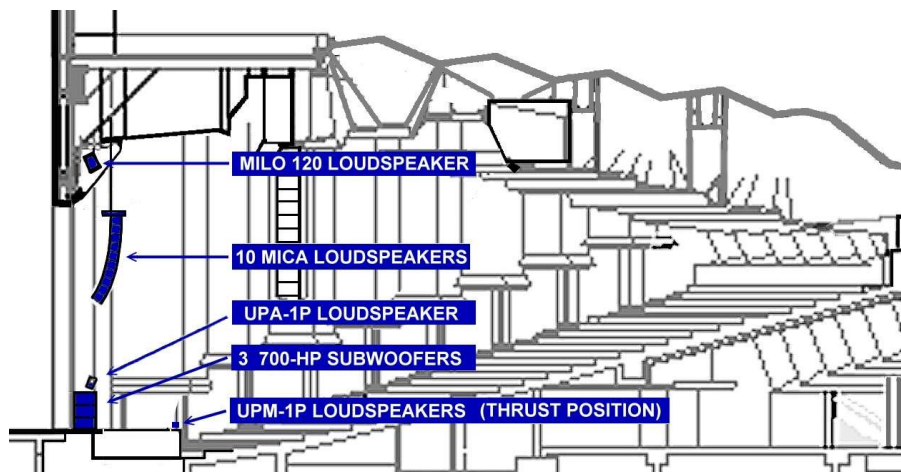
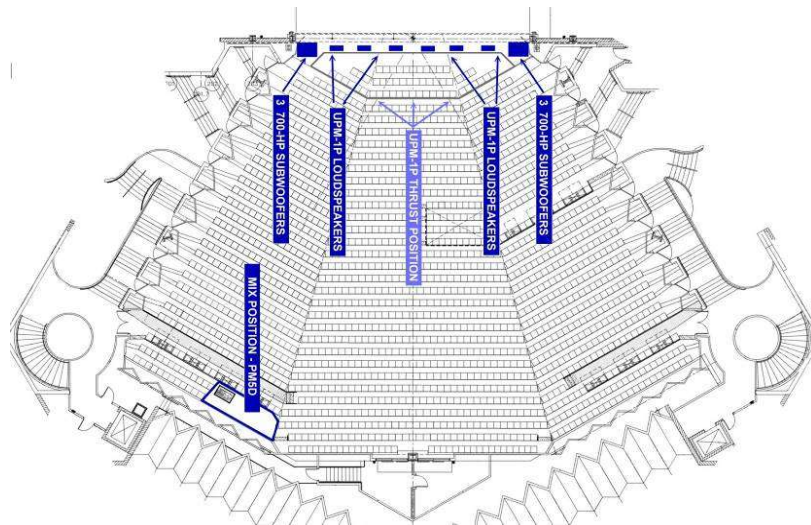
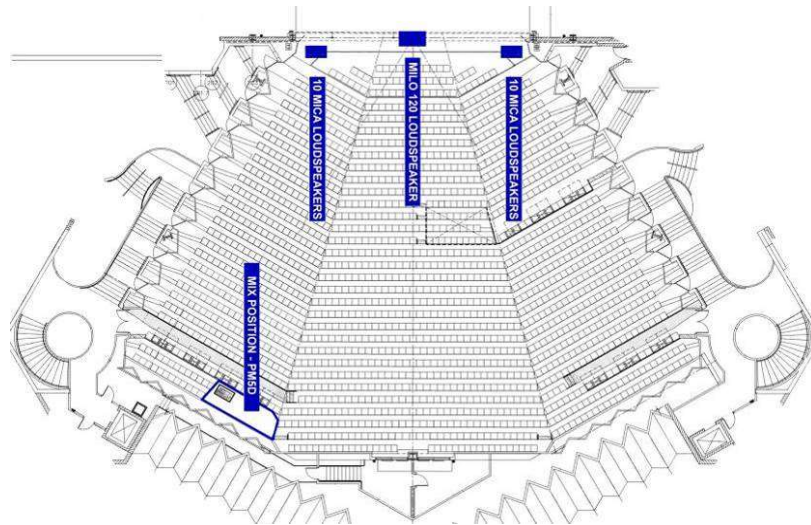
4 – Crown PCC

12 – DI Boxes: 8 single channel, 4 stereo

MEYER SOUND SYSTEM

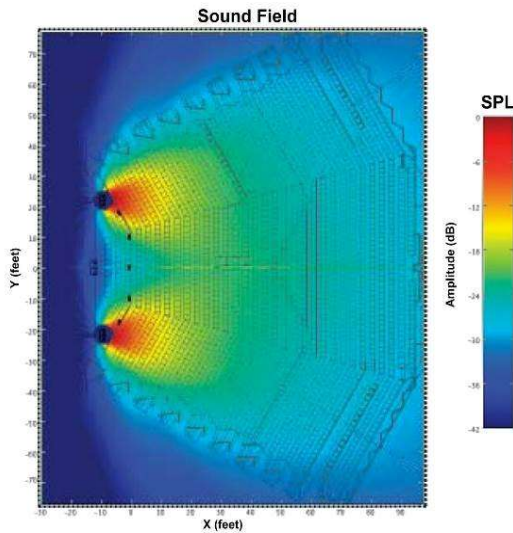
Loudspeaker Locations

Designed and installed by PRO Sound & Video, Miami, Florida
Ron Sintow, Frank Snipes, Kelly Prince

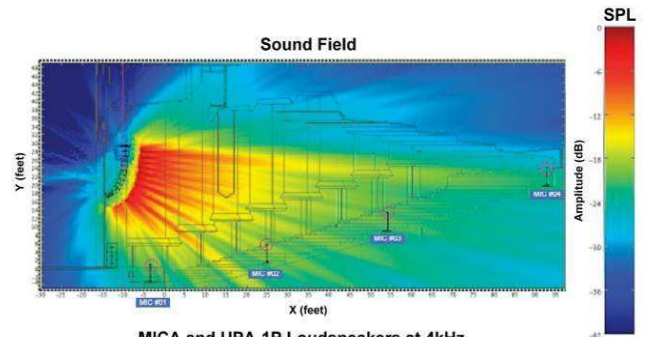


MEYER SOUND SYSTEM

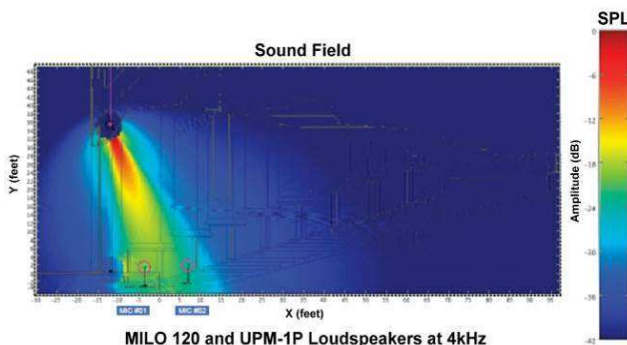
Direct Sound Fields



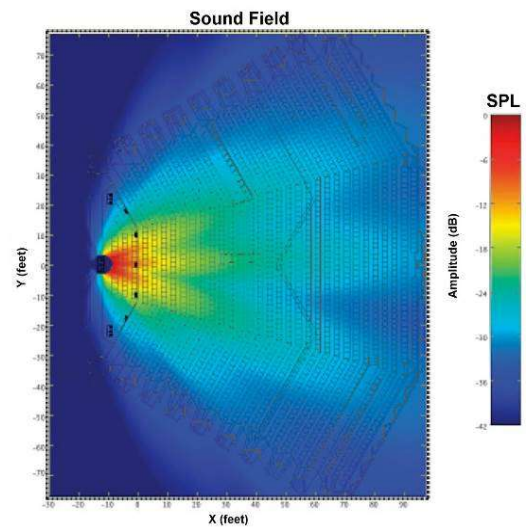
MICA System at 4kHz
MICA System at 4 kHz



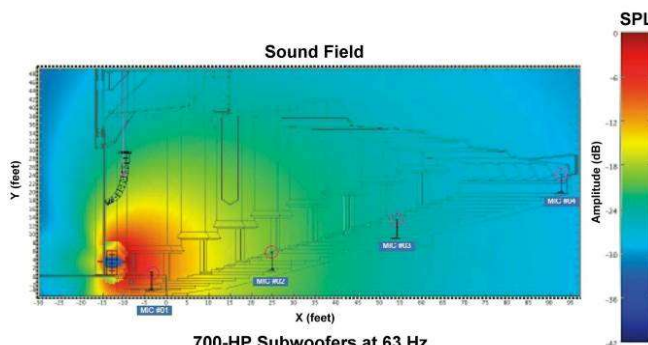
MICA and UPA-1P Loudspeakers at 4kHz
MICA and UPA-1P System at 4 kHz



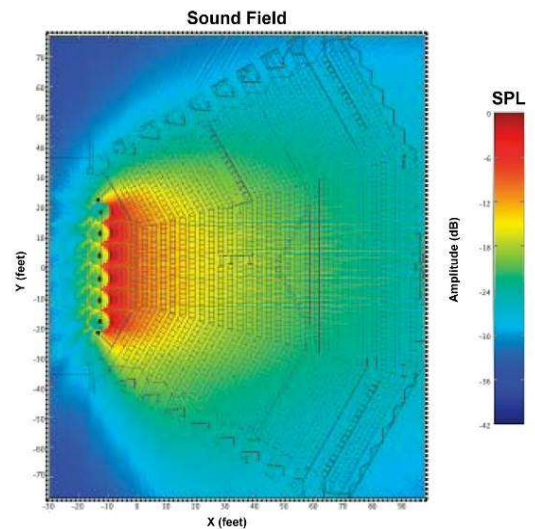
MILO 120 and UPM-1P Loudspeakers at 4kHz
MILO 120 and UPM-1P System at 4 kHz



MILO 120 System at 4kHz
MILO 120 System at 4 kHz



700-HP Subwoofers at 63 Hz
700-HP Subwoofers at 63 Hz



UPM-1P System at 4kHz (Pit Down)
UPM-1P System at 4 kHz – Orchestra Pit Seated

PROJECTION

OVERSTAGE ONLY. DOES NOT HANG FOH.

Projector: Christie D16HD-HS 15,750 ISO Lumens,
14,000 ANSI Lumens
Inputs: HDMI x2, 3GSDI x1, DVI-D x1, HD15 x1, USB
x1, HDBaseT (RJ45 x1)
Lens: Christie 0.84-1.02:1 E Series Lens
Mount: Flyable projector mount, attaches to batten
Throw Distance: 22' from projector to screen.

Screen(s):
DaLite 11'6" x 15' Dual Vision Front & Rear
DaLite 13' x 22' Dual Vision Front & Rear Screen
Projection with Fast Fold Truss (flyable)
DVD Player: Denon DNV310 Professional
Switcher: Pioneer VSW-1 Pro Video Switcher
Connectivity: VGA & HDMI Baluns
2 CAT6 lines from FOH mix position to SR



PROPERTIES

DORIAN BLAKE
Properties Master
Cell: (941) 350-7782

Dance Floor:
7 Rolls black
"Marley" - Harlequin
78.5" W x 65'7" L (2x20 meters)

Platforms:
Quantity: 52 – 4'x 8' w/cam locks
Legs in 8" increments to 32"
Various step units; black facings

Carpets:
Drum riser carpets
Various area rugs
Cable protection and offstage rugs

Lecterns (all covered with gray carpet fabric):
1 – 47" H x 32" W x 22" D
1 – 47" H x 25" W x 22" D (w/built-in mic)
1 – 49" H x 23" W x 16" D

Orchestra Pit:
Dimensions: 24' W, 12'-0" D at CL.
Normally set at ±8'-0" below stage level for pit
use with additional 6'+ of depth to rear wall
Gala Spiral Lift elevator system
58 auditorium seats on rolling wagon

Orchestra Shells
Wenger Diva stage orchestra shell:
see stage plans for placement.

Chairs:
84 – Black Cloth Regular Orchestra (Wenger)
23 – Black Cloth Cello (Wenger)

Stools:
12 – Black

Music Stands & Lights:
104 – Black (Wenger)
50 – Stand Lights

Conductor Podiums:
1 – 36"x 36"x16"; 2 - 30"x 30"x8"
1 – Large Conductor's music stand

Other:
2 – 10'x10' pop-up quick-change booths
Large variety of tables, stools, and chairs
24" motorized mirror ball, various props, etc.
10' x 10' Pipe and Drape Wall (black)

PIANOS

NATE BENJAMIN
Piano Technician
(407) 247-4724

1 – 9' Steinway D: 2006 #579778 A:440
1 – 9' Steinway D: 1987 #506817 A:441
1 – 9' Yamaha CF3 (on loan from Yamaha)

1 – 45" Yamaha P22 Upright, Satin Walnut
3 Steinway Artist Benches, 2 wooden benches

WARDROBE

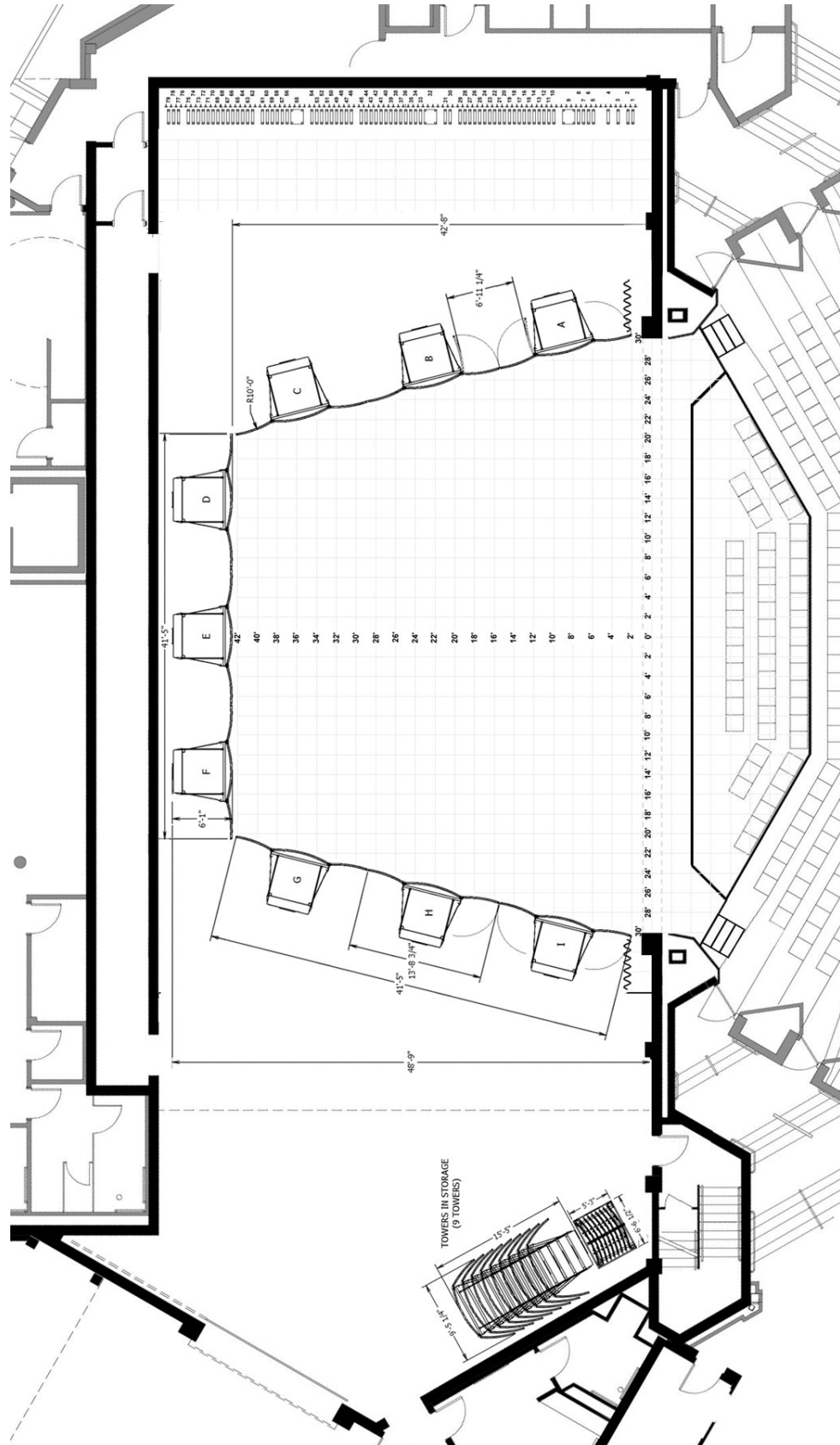
(See Wardrobe Room Location on Floor Plan p. 31)

Washers: 3
Dryers: 3
Irons: 5+
Ironing Boards: 3+

Steamers: 5+
Rolling Racks: 7+
Bath Towels: 75+
Hand Towels: 40+

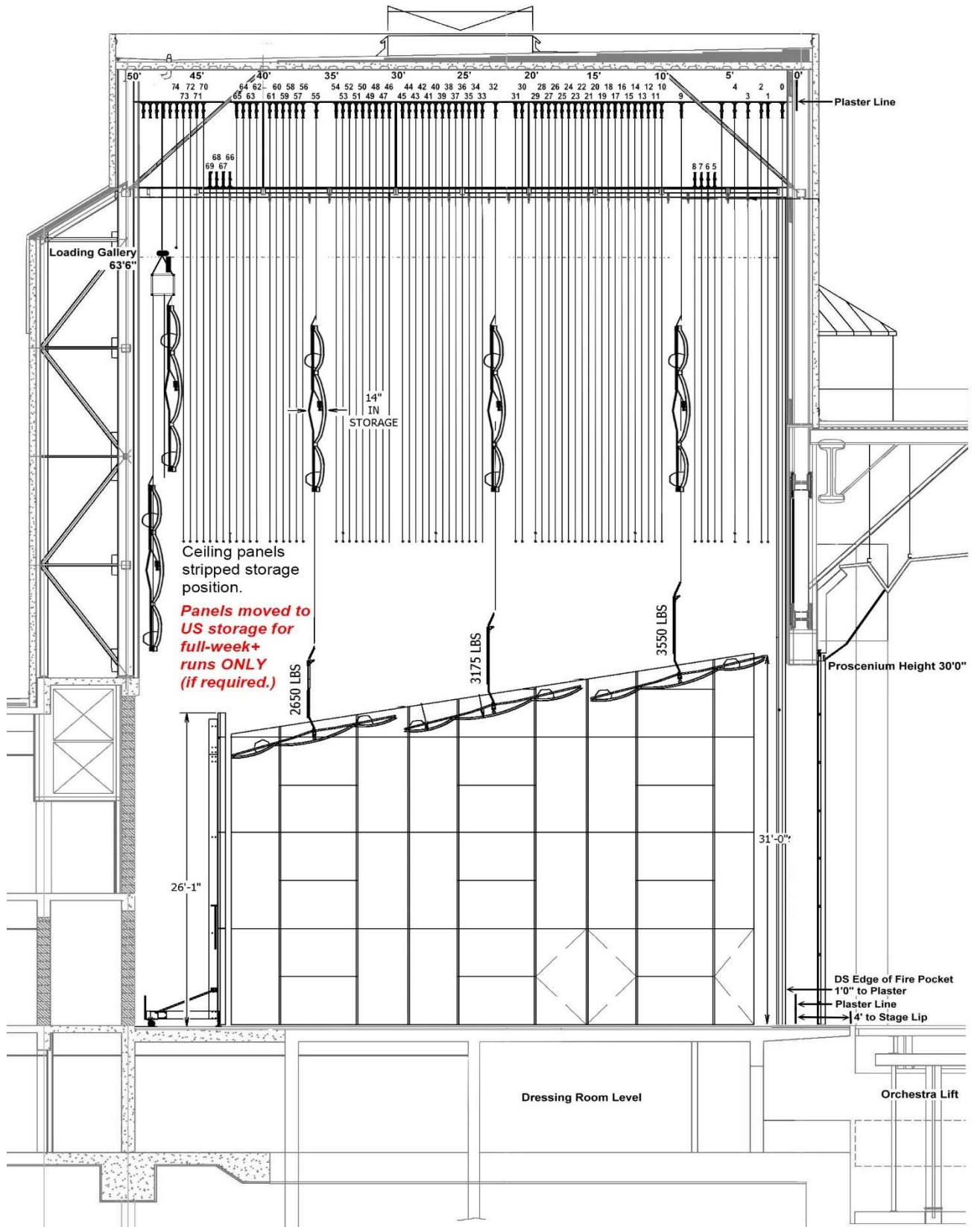
ORCHESTRA SHELL PLAN

Wenger Diva Acoustic Shell installed summer 2015.



ORCHESTRA SHELL SECTION

Elevation looking at back of panels from Stage Right
For full week+ shows ONLY, ceiling panels can be removed and stored far upstage.



DRESSING ROOMS

(See Locations on Floor Plan)

Stage Level:

Dressing Room #1: #1 “Star” Room

Location: Off-stage Right

Capacity: 1-2 Persons

Includes:

Shower, Toilet and sink
Make-up mirrors, Clothes Rack
Sofa & upholstered chair
TV, Phone & High-Speed Internet

Lower Level:

Dressing Rooms #2, #3, #4, #6 (“Star” dressing rooms, carpeted)

Capacity: 1-2 Persons each

Each room includes:

Shower
Toilet and sink
Make-up mirrors
Clothes Rack
Sofa & upholstered chair

Dressing Room #2 also includes:

TV & Phone & High-Speed Internet

Dressing Room #5: #2 “Star” Room

Location: Between #4 and #6

Capacity: 1-2 Persons

Includes:

Shower, Toilet and Sink
Make-up mirrors, Clothes Rack
Sofa
Phone & High-Speed Internet

Lower Level (cont’d):

Dressing Rooms #7, #8, #9

Capacity: 4-6 persons

Each include:

Shower
Toilet and sink
Make-up mirrors
Clothes Rack

Chorus Rooms

Capacity (each): ± 30 persons

Each include:

Make-up mirrors
2 sinks
Clothes Rack

En suite restroom and showers:

4 sinks and mirrors (3 in Chorus #2)
2 urinals (Chorus #2)
4 toilets (2 Chorus #2)
4 showers (1 handicap accessible)

Musicians Room

Includes:

Clothes Rack
Tables & chairs

GREEN ROOM / HOSPITALITY

(See Location on Floor Plan)

House Caterer

Mattison’s

Advance Contact: **Jay Lavoie**

203-631-8888 mobile

JayL@Mattisons.com

Full-service catering and hospitality. Complete kitchen setup. Seating for up to 36.

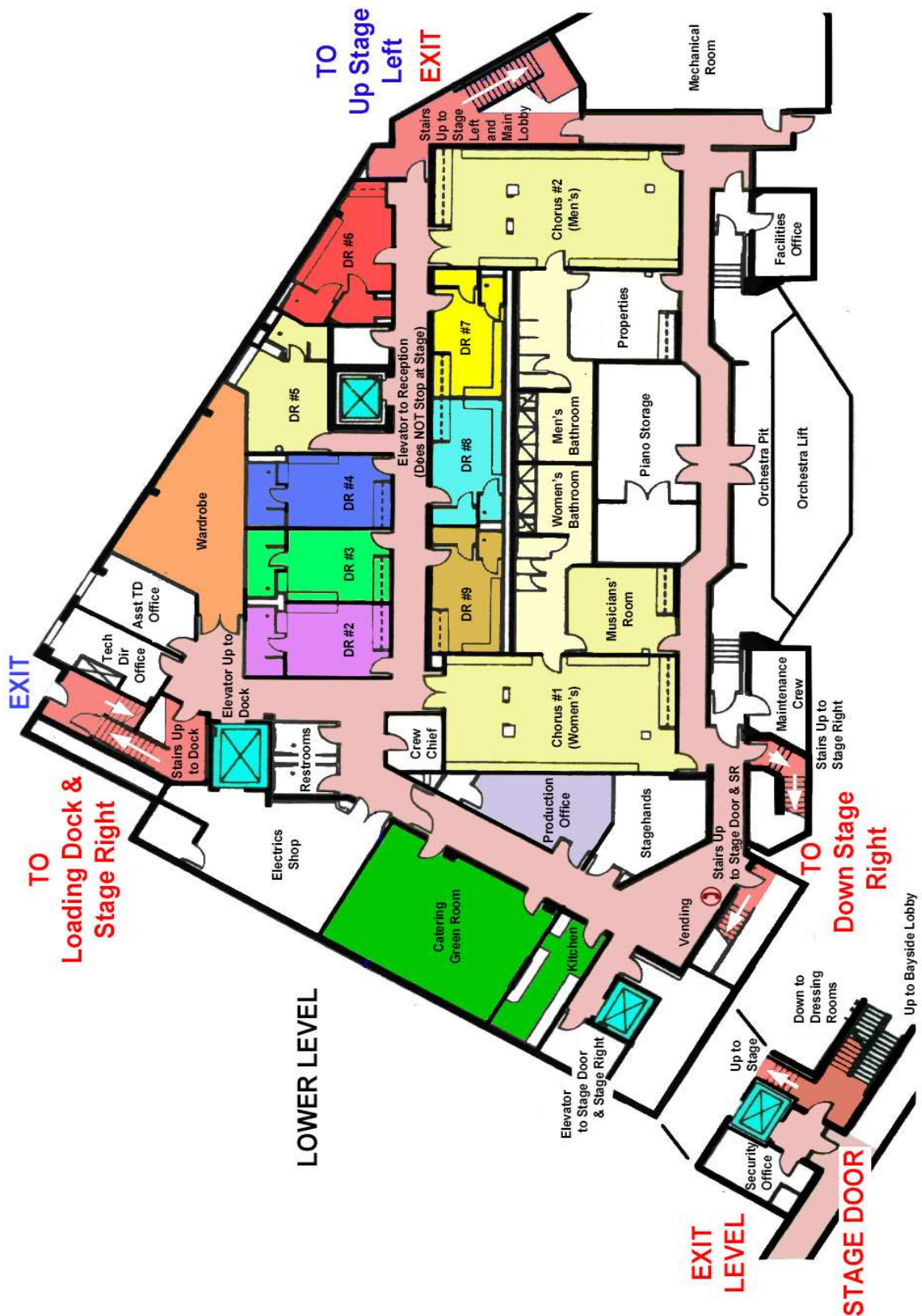
All special diets accommodated.

As part of the Broadway League and City of Sarasota Green Initiatives, it is the policy of the Van Wezel to permit individual bottles of water for artists only on stage. All other bottled water is available at coolers located in the wings and backstage.

To keep food wastage to a minimum, House Policy is that all catering is set up in the Green Room. Artists may take food from the Green Room into their dressing rooms, which are all steps away from the Green Room. Individual catering setups in dressing rooms are discouraged and must be approved by the Technical Director as part of show advance.

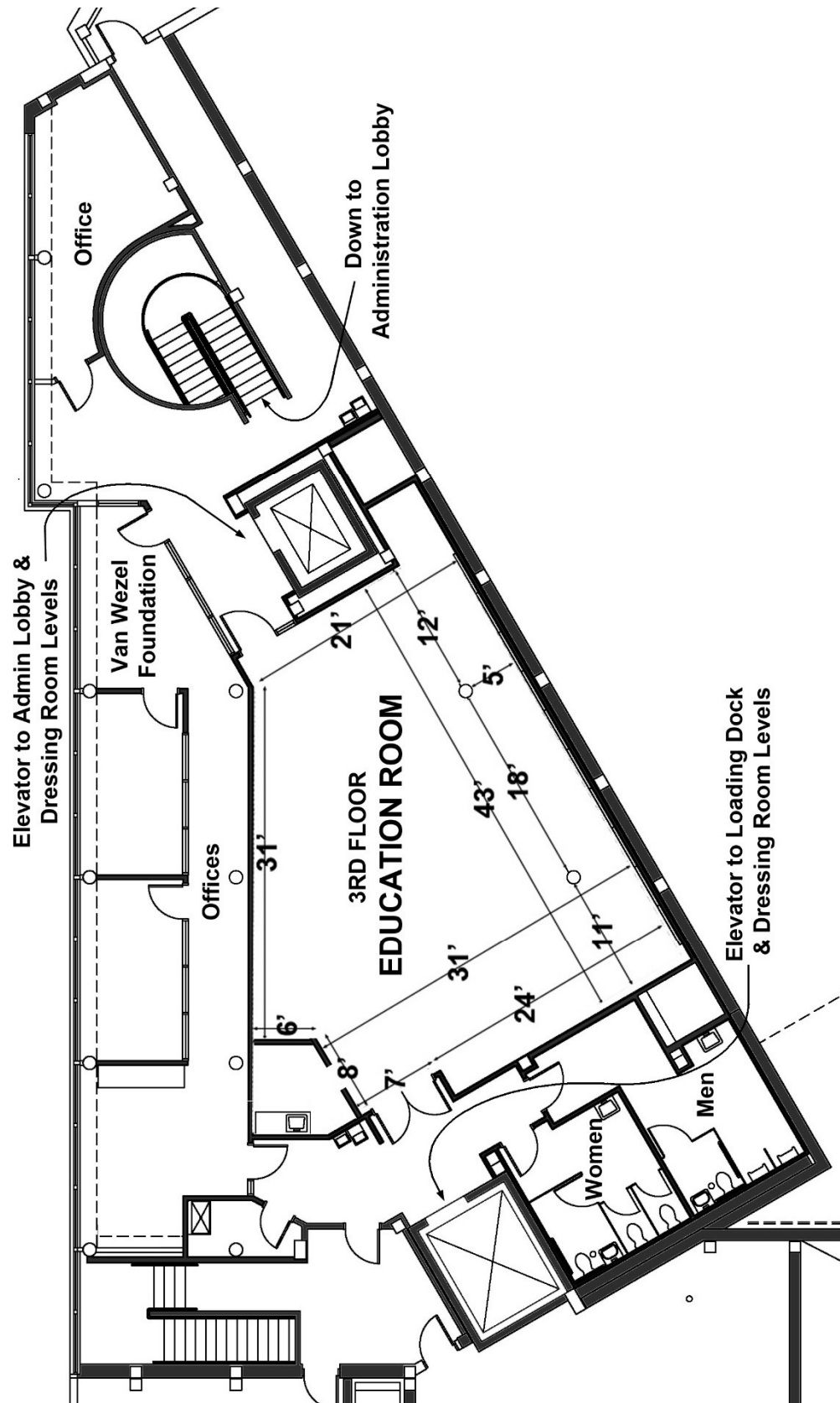
LOWER LEVEL FLOOR PLAN

SEE ADDITIONAL HALL SCHEMATICS AND FLOOR PLANS ELSEWHERE IN SPECS.



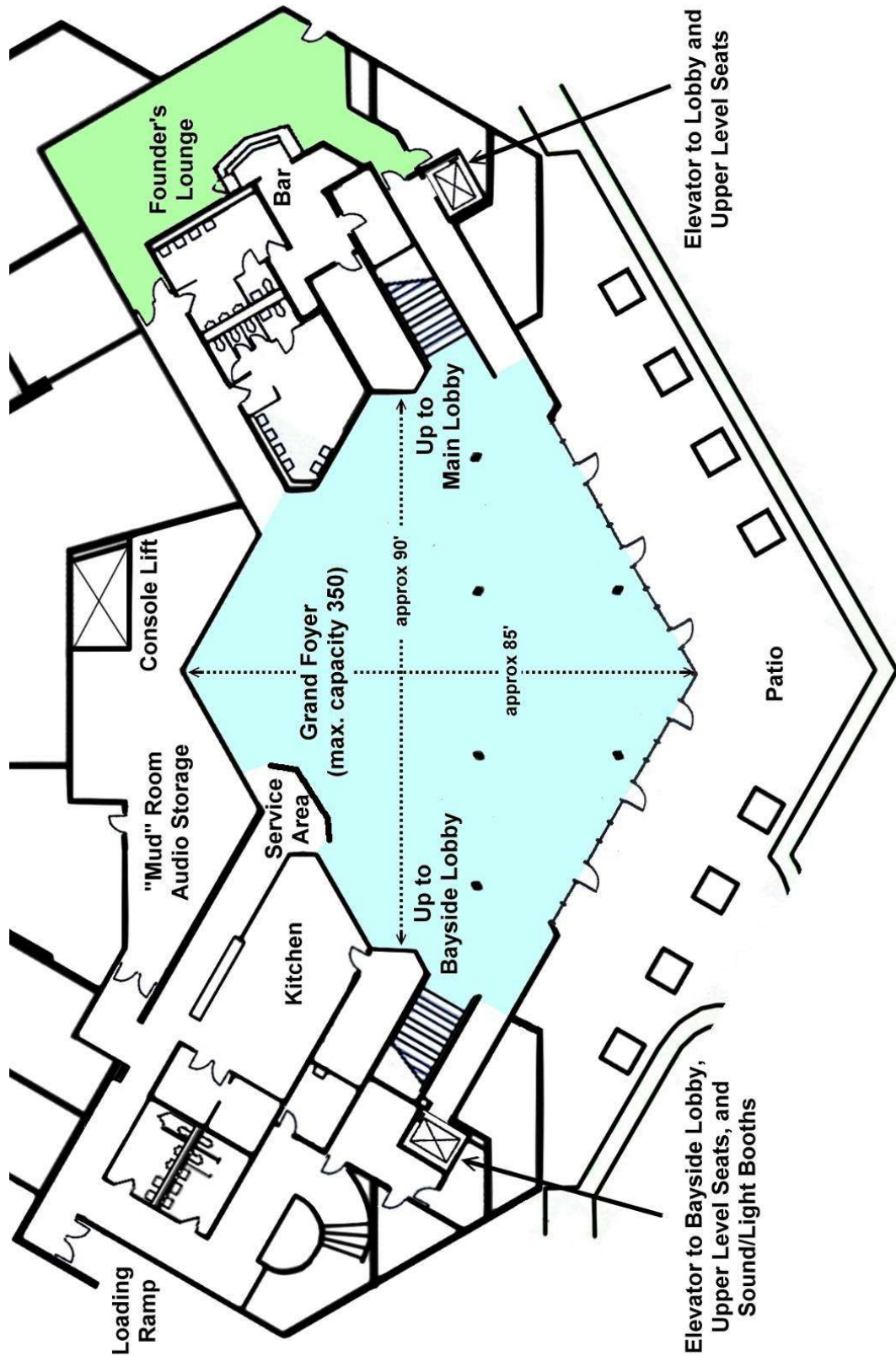
3RD FLOOR EDUCATION ROOM PLAN

(May be reserved for rehearsals, warmups, larger Meet & Greets)



GRAND FOYER

(Directly below Hall seating)



AREA INFO

(See Maps, page 40-41)

Health

Sarasota Memorial Hospital

1700 S Tamiami Trail (2.5 miles)
(941) 917-9000 (Main)
(941) 917-8555 (Emergency)

Pharmacies

Publix Super Market

1044 N Tamiami Trl (Across from parking lot)
(941) 366-3270 Store (941) 366-2181 Pharmacy

Walgreens

3535 N Tamiami Trl (2.0 miles)
(941) 360-3474

CVS Pharmacy

3709 N Tamiami Trl (2.0 miles)
(941) 355-4155

Walgreens (24 Hours)

5800 Bee Ridge Road (9.1 miles)
(941) 377-1589

Groceries / Wine & Spirits

Publix Super Market

1044 N Tamiami Trl (Across from parking lot)
(941) 366-3270

Whole Foods

1451 1st St (0.5 miles)
(941) 316-4700 (Amazon order/store pickup option)

Michael's Wine Cellar

1283 S Tamiami Trail (2.3 miles)
(941) 955-2675

Total Wine & More

8539 Cooper Creek Blvd (9.0 miles)
(941) 351-7895

Music Supplies

Sam Ash Music Stores

7606 N. Tamiami Trl (4.6 miles)
(941) 351-7793

Guitar Center

8223 Cooper Creek Boulevard (9.0 miles)
(941) 351-4008

Fogt's Music (Band/Orchestra)

4209 S. Tamiami Trl (4.4 miles)
(941) 929-1595

Banks

Chase

One Sarasota Tower
2 N Tamiami Trail, Ste 101 (0.9 miles)
(941) 954-8076
Closed Sat & Sun

Bank of America

1990 Fruitville Road (1.8 miles)
(941) 444-3978
Closed Sat & Sun

Wells Fargo

1819 Main Street, 1st Floor (1.8 miles)
(941) 361-5900
Closed Sat & Sun

Chase

3500 S. Tamiami Trail (4.1 miles)
(941) 554-0220
Open Sat 9a-2p / Closed Sun

Cleaners & Shoe Repair

Ringling Cleaners

2253 Ringling Blvd (2.2 miles)
(941) 362-0090
Closed Sat & Sun
(same day service)

Carlson Cleaners

3115 Southgate Circle (4.5 miles)
(941) 275-4647
Closed Sunday
(In by 10:00, out by 5:00)

Arcadi Shoe Repair

2243 Ringling Blvd (1.9 miles)
(941) 955-7880
Closed Sat & Sun

AAA Laundry & Dry Cleaning

1411 57th Avenue West (7.5 miles)
(941) 756-4998
(Same day fluff & fold service 7 days/week if in by 10am. Dry cleaning sent off site.)

Restaurants:

Restaurants come and go. Please check online before ordering.

Hardware, Computer, Target, Wal-Mart

DG Ace Hardware

3371 17th St (at Lockwood Ridge Rd) (3.5 miles)
(941) 366-1756

Home Depot

5475 University Parkway (9.0 miles)
(941) 358-3360

Best Buy

4020 S Tamiami Trail (4.0 miles)
(941) 923-3955

Target

101 N Cattlemen Rd (9.7 miles)
(941) 360-7520

Target

5350 Fruitville Road (5.5 miles)
(941) 379-6660

Wal-Mart Super Center

8320 Lockwood Ridge (6.3 miles)
(941) 351-6969

Best Buy

University Town Center
135 N Cattlemen Rd (9.7 miles)
(941) 360-7959

Apple Store

The Mall at University Town Center
140 University Town Center Drive (9.7 miles)
(941) 358-4600

Touring Coach and Limousine Companies

Primetime Limousine

Joe Russo
941-792-3400

Yellow Cab

(941) 955-3341

Conscious Cab

(941) 306-6653

Hotels

*Listed by Distance from Van Wezel (Mapquest).
VW makes no representations about quality or suitability.*

Hotel Indigo Sarasota

1223 Boulevard of the Arts (0.12 miles)
(941) 487-3800

Hyatt-Sarasota

1000 Boulevard of the Arts (0.16 miles)
(941) 953-1234

Ritz-Carlton-Sarasota

1111 Ritz Carlton Dr (0.4 miles away)
(941) 309-2000

La Quinta Inn & Suites

1803 N Tamiami Trl (0.8 miles)
(941) 366-5128

Art Ovation Hotel

1255 N. Palm Avenue (1.4 miles)
(941) 316-0808

Baymont by Wyndham

1425 S Tamiami Trl (1.9 miles)
(941) 955-9841

Quality Inn Sarasota-Bradenton Airport

4800 N Tamiami Trl (2.3 miles)
(941) 355-7091

Days Inn Sarasota-Bradenton Airport

5000 N. Tamiami Trail (2.4 miles)
(941) 444-9074

POLICIES AND PROCEDURES

Animals

Except for guide dogs for the visually impaired and service dogs, animals are not permitted in the auditorium, lobbies, on the stage, or any other areas within the Van Wezel Performing Arts Hall without written permission.

Alcoholic Beverages

City of Sarasota policy forbids the Hall from purchasing alcoholic beverages. Alcoholic beverages are allowed; however tour companies must arrange for alcohol service with the venue's resident caterer or by purchasing offsite.

Backstage catering

Please coordinate backstage catering with the Van Wezel Technical Director.

Broadcast

Advance approval and fees are required for recording or broadcasting any performance, lecture, concert and/or public or private meetings by radio or television. Recording is also subject to IATSE Local 412 rules and fees.

Concessions

No sales, authorization of sales, or distribution of food items, merchandise, or special services are allowed without prior written approval from the Van Wezel Management. All concessions are subject to house commissions.

Flammable material & Pyrotechnics

The use of flammable material, open flames, or other such devices in the Van Wezel are prohibited. Liquids or solid substances of an explosive or highly inflammable nature are prohibited. The use of stage pyrotechnics or open flames requires advance notification and approval of the Technical Director and, in some cases, a Sarasota County Fire Department permit.

Orchestra Shell

The Wenger Diva orchestra shell is available as appropriate at no charge to Van Wezel concerts. Due to time and cost, the three flown ceiling panels are not removable except for Broadway show runs of one week or more.

Parking

At no time should any car be blocking a fire lane or park in a reserved parking space. Parking in a loading zone should be limited to unloading and loading and vehicles should be moved to a marked parking space as soon as possible. Those in violation are subject to be ticketed or towed at the owner's expense. Trucks and buses must be parked in their designated areas.

Public Safety

Placing items in corridors or blocking emergency exits or obstructing any portion of the sidewalks, entries, halls, elevators, or ways of access to the public utilities of the building is prohibited. Clearance must also be maintained around sprinkler heads, and nothing may be attached to them.

Smoking

The Van Wezel Performing Arts Hall is a non-smoking facility, which includes e-cigarettes. There are ash cans located just outside facility entrances for the convenience of guests who smoke.

Stage and Backstage Areas

At no time are members of the public to come on stage without the approval and supervision of the Technical Director. Backstage visitors and guests must be approved by the Van Wezel and must enter the backstage areas through the Stage Door or be accompanied by a member of the Van Wezel or tour staff.

Technical Director

The Van Wezel's Technical Director is responsible for all stage and backstage areas and operations and is the final authority on all theater practices. Safety is always of paramount importance. All stage operations are subject to rules of the Van Wezel and its agreements with Local 412 of the International Alliance of Theatrical Stage Employees (IATSE).

Sound System

The Van Wezel's Meyer Sound system was installed in 2010 by Pro Sound & Video, Miami, and SIMed to the Hall by Frank Snipes, Kelly Prince, and Meyer Sound. The system has been praised by the top engineers in the business, including Hugh Johnson (Vince Gill) and Tom Young (Tony Bennett). *The arrays cannot be taken down for any reason*, and changes to the Galileo programming must be approved by the Head Audio, System Tech, and Technical Director. The system is restored to Van Wezel specs following each performance, and *any changes made by a tour engineer that corrupt the system in any way will be reported to tour management, and the tour company will be responsible for any and all costs associated with repairs or reprogramming.*